

## N-Cadherin Polyclonal Antibody

**Catalog No.** E-AB-64010

*Note:* Centrifuge before opening to ensure complete recovery of vial contents.

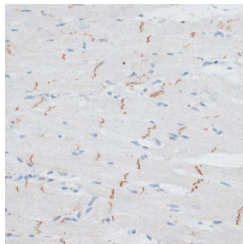
### Description

|                     |  |
|---------------------|--|
| <b>Reactivity</b>   | Human,Mouse,Rat  |
| <b>Immunogen</b>    | A synthetic peptide of human N-Cadherin (NP_001783.2). |
| <b>Host</b>         | Rabbit   |
| <b>Isotype</b>      | IgG  |
| <b>Purification</b> | Affinity purification                                  |
| <b>Conjugation</b>  | Unconjugated   |
| <b>Buffer</b>       | PBS with 0.02% sodium azide, 50% glycerol, pH7.3.      |

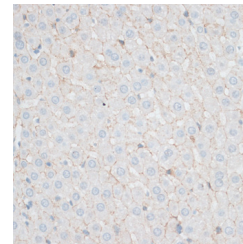
### Applications Recommended Dilution

|            |            |
|------------|------------|
| <b>IHC</b> | 1:50-1:200 |
| <b>IF</b>  | 1:50-1:200 |

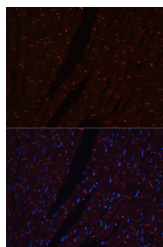
### Data



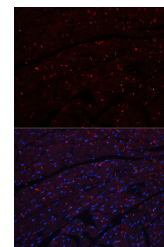
Immunohistochemistry of paraffin-embedded Rat heart using N-Cadherin Polyclonal Antibody at dilution of 1:100 (40x lens).



Immunohistochemistry of paraffin-embedded Rat liver using N-Cadherin Polyclonal Antibody at dilution of 1:100 (40x lens).



Immunofluorescence analysis of Rat heart using N-Cadherin Polyclonal Antibody



Immunofluorescence analysis of Mouse heart using N-Cadherin Polyclonal Antibody

### Preparation & Storage

**Storage** Store at -20°C. Avoid freeze / thaw cycles.

### Background

This gene encodes a classical cadherin and member of the cadherin superfamily. Alternative splicing results in multiple

### For Research Use Only

transcript variants, at least one of which encodes a preproprotein is proteolytically processed to generate a calcium-dependent cell adhesion molecule and glycoprotein. This protein plays a role in the establishment of left-right asymmetry, development of the nervous system and the formation of cartilage and bone.