

# ATG13 Polyclonal Antibody

Catalog Number:E-AB-60097

**Note:** Centrifuge before opening to ensure complete recovery of vial contents.

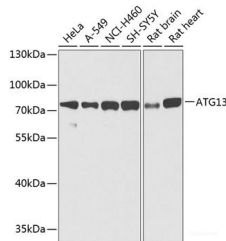
## Description

|                     |   |
|---------------------|---|
| <b>Reactivity</b>   | Human,Mouse,Rat                                 |
| <b>Immunogen</b>    | Recombinant fusion protein of human ATG13       |
| <b>Host</b>         | Rabbit  |
| <b>Isotype</b>      | IgG   |
| <b>Purification</b> | Affinity purification                           |
| <b>Conjugation</b>  | Unconjugated                                    |
| <b>Formulation</b>  | PBS with 0.02% sodium azide,50% glycerol,pH7.3. |

## Applications Recommended Dilution

|           |              |
|-----------|--------------|
| <b>WB</b> | 1:500-1:2000 |
| <b>IF</b> | 1:50-1:200   |

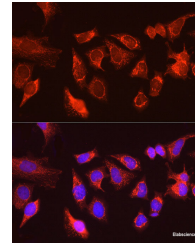
## Data



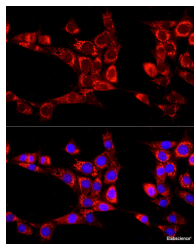
Western blot analysis of various lysates using ATG13 Polyclonal Antibody at 1:1000 dilution.

**Observed Mw:72KDa**

**Calculated Mw:44kDa/52kDa/56kDa/60kDa**



Immunofluorescence analysis of HeLa cells using ATG13 Polyclonal Antibody at dilution of 1:100 (40x lens). Blue: DAPI for nuclear staining.



Immunofluorescence analysis of NIH/3T3 cells using ATG13 Polyclonal antibody at dilution of 1:100 (40x lens). Blue: DAPI for nuclear staining.

## Preparation & Storage

**Storage** Store at -20°C. Avoid freeze / thaw cycles.

## Background

The protein encoded by this gene is an autophagy factor and a target of the TOR kinase signaling pathway. The encoded protein is essential for autophagosome formation and mitophagy.

## For Research Use Only

A Reliable Research Partner in Life Science and Medicine

Toll-free: 1-888-852-8623

Web: [www.elabscience.com](http://www.elabscience.com)

Tel: 1-832-243-6086

Email: [techsupport@elabscience.com](mailto:techsupport@elabscience.com)

Fax: 1-832-243-6017