

IKBKG Polyclonal Antibody

Catalog No. E-AB-60109

Note: Centrifuge before opening to ensure complete recovery of vial contents.

Description

| | |
|---------------------|--|
| Reactivity | Human, Mouse, Rat |
| Immunogen | Recombinant fusion protein of human IKBKG (NP_003630.1). |
| Host | Rabbit |
| Isotype | IgG |
| Purification | Affinity purification |
| Conjugation | Unconjugated |
| Buffer | PBS with 0.02% sodium azide, 50% glycerol, pH7.3. |

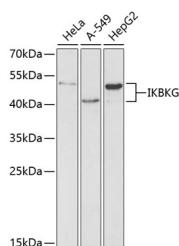
Applications Recommended Dilution

WB 1:500-1:2000 IHC

1:50-1:100 IF

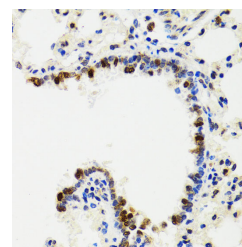
1:50-1:200

Data

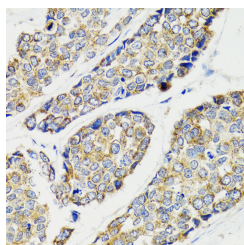


Western blot analysis of extracts of various cell lines using IKBKG Polyclonal Antibody at dilution of 1:1000.

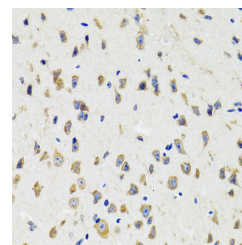
Observed Mw:48kDa
Calculated Mw:36kDa/48kDa/55kDa



Immunohistochemistry of paraffin-embedded Rat lung using IKBKG Polyclonal Antibody at dilution of 1:100 (40x lens).

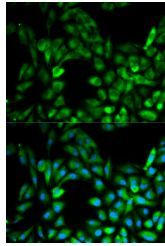


Immunohistochemistry of paraffin-embedded Human esophageal cancer using IKBKG Polyclonal Antibody at dilution of 1:100 (40x lens).



Immunohistochemistry of paraffin-embedded Mouse brain using IKBKG Polyclonal Antibody at dilution of 1:100 (40x lens).

For Research Use Only



Immunofluorescence analysis of MCF-7 cells using
IKBKG Polyclonal Antibody

Preparation & Storage

Storage Store at -20°C. Avoid freeze / thaw cycles.

Background

This gene encodes the regulatory subunit of the inhibitor of kappaB kinase (IKK) complex, which activates NF-kappaB resulting in activation of genes involved in inflammation, immunity, cell survival, and other pathways. Mutations in this gene result in incontinentia pigmenti, hypohidrotic ectodermal dysplasia, and several other types of immunodeficiencies. A pseudogene highly similar to this locus is located in an adjacent region of the X chromosome.