

PARP1 Polyclonal Antibody

Catalog No. E-AB-62000

Note: Centrifuge before opening to ensure complete recovery of vial contents.

Description

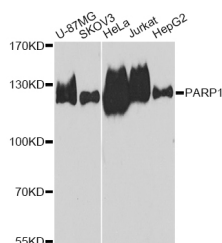
Reactivity	Human, Mouse, Rat
Immunogen	Recombinant protein of human PARP1
Host	Rabbit
Isotype	IgG
Purification	Affinity purification
Conjugation	Unconjugated
Buffer	PBS with 0.02% sodium azide and 50% glycerol pH 7.4.

Applications Recommended Dilution

WB 1:1000 - 1:3000

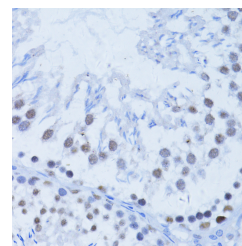
IHC 1:50 - 1:200

Data

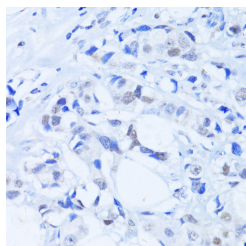


Western blot analysis of extracts of various cell lines with PARP1 Polyclonal Antibody

Observed Mw:115kDa
Calculated Mw:113kDa



Immunohistochemistry of paraffin-embedded rat testis with PARP1 Polyclonal Antibody



Immunohistochemistry of paraffin-embedded human breast cancer with PARP1 Polyclonal Antibody

Preparation & Storage

Storage Store at -20°C. Avoid freeze / thaw cycles.

Background

For Research Use Only

This gene encodes a chromatin-associated enzyme, poly(ADP-ribosyl)transferase, which modifies various nuclear proteins by poly(ADP-ribosyl)ation. The modification is dependent on DNA and is involved in the regulation of various important cellular processes such as differentiation, proliferation, and tumor transformation and also in the regulation of the molecular events involved in the recovery of cell from DNA damage. In addition, this enzyme may be the site of mutation in Fanconi anemia, and may participate in the pathophysiology of type I diabetes.

For Research Use Only