

(KO Validated) ROCK1 Polyclonal Antibody

Catalog No. E-AB-62198

Note: Centrifuge before opening to ensure complete recovery of vial contents.

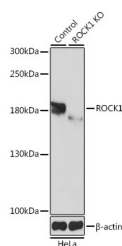
Description

Reactivity	Human, Mouse, Rat
Immunogen	Recombinant fusion protein of human ROCK1 (NP_005397.1).
Host	Rabbit
Isotype	IgG
Purification	Affinity purification
Conjugation	Unconjugated
Buffer	PBS with 0.02% sodium azide, 50% glycerol, pH7.3.

Applications Recommended Dilution

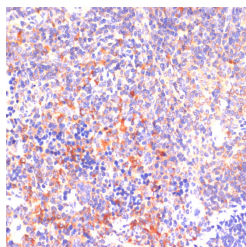
WB	1:500-1:2000
IHC	1:50-1:100

Data

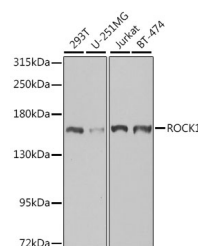


Western blot analysis of extracts from normal (control) and ROCK1 knockout (KO) HeLa cells using ROCK1 Polyclonal Antibody at dilution of 1:1000.

Observed Mw:158kDa
Calculated Mw:158kDa



Immunohistochemistry of paraffin-embedded Mouse spleen using ROCK1 Polyclonal Antibody at dilution of 1:100 (40x lens).



Western blot analysis of extracts of various cell lines using ROCK1 Polyclonal Antibody at dilution of 1:1000.

Preparation & Storage

For Research Use Only

Storage Store at -20°C. Avoid freeze / thaw cycles.

Background

This gene encodes a protein serine/threonine kinase that is activated when bound to the GTP-bound form of Rho. The small GTPase Rho regulates formation of focal adhesions and stress fibers of fibroblasts, as well as adhesion and aggregation of platelets and lymphocytes by shuttling between the inactive GDP-bound form and the active GTP-bound form. Rho is also essential in cytokinesis and plays a role in transcriptional activation by serum response factor. This protein, a downstream effector of Rho, phosphorylates and activates LIM kinase, which in turn, phosphorylates cofilin, inhibiting its actin-depolymerizing activity. A pseudogene, related to this gene, is also located on chromosome 18.

For Research Use Only