

**Note:** Centrifuge before opening to ensure complete recovery of vial contents.

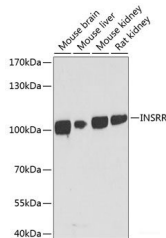
## Description

<b>Reactivity</b>	Mouse,Rat
<b>Immunogen</b>	Recombinant fusion protein of human INSRR (NP_055030.1).
<b>Host</b>	Rabbit
<b>Isotype</b>	IgG
<b>Purification</b>	Affinity purification
<b>Conjugation</b>	Unconjugated
<b>Formulation</b>	PBS with 0.02% sodium azide, 50% glycerol, pH7.3.

## Applications Recommended Dilution

<b>WB</b>	1:500-1:1000
-----------	--------------

## Data



Western blot analysis of extracts of various cell lines using INSRR Polyclonal Antibody at dilution of 1:1000.

**Observed Mw:105kDa**  
**Calculated Mw:143kDa**

## Preparation & Storage

**Storage** Store at -20°C. Avoid freeze / thaw cycles.

## Background

INSRR (Insulin Receptor Related Receptor) is a Protein Coding gene. Diseases associated with INSRR include Uterine Corpus Sarcoma and Rickettsialpox. Among its related pathways are Activation of cAMP-Dependent PKA and Actin Nucleation by ARP-WASP Complex. Gene Ontology (GO) annotations related to this gene include transferase activity, transferring phosphorus-containing groups and protein tyrosine kinase activity. An important paralog of this gene is IGF1R.

## For Research Use Only

A Reliable Research Partner in Life Science and Medicine

Toll-free: 1-888-852-8623

Web: [www.elabscience.com](http://www.elabscience.com)

Tel: 1-832-243-6086

Email: [techsupport@elabscience.com](mailto:techsupport@elabscience.com)

Fax: 1-832-243-6017