

CLUH Polyclonal Antibody

Catalog No. E-AB-63283

Note: Centrifuge before opening to ensure complete recovery of vial contents.

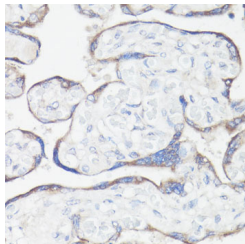
Description

Reactivity	Human, Mouse
Immunogen	Recombinant fusion protein of human CLUH (NP_056044.3).
Host	Rabbit
Isotype	IgG
Purification	Affinity purification
Conjugation	Unconjugated
Buffer	PBS with 0.02% sodium azide, 50% glycerol, pH7.3.

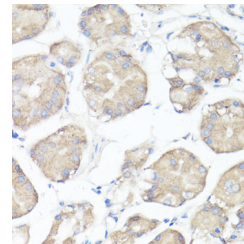
Applications Recommended Dilution

IHC	1:50-1:200
IF	1:50-1:200

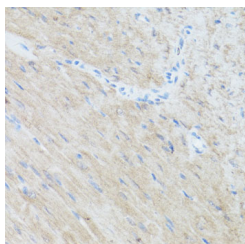
Data



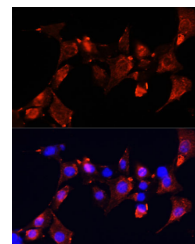
Immunohistochemistry of paraffin-embedded Human placenta using CLUH Polyclonal Antibody at dilution of 1:100 (40x lens).



Immunohistochemistry of paraffin-embedded Human stomach using CLUH Polyclonal Antibody at dilution of 1:100 (40x lens).

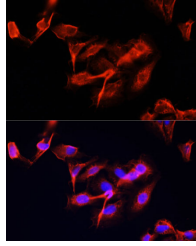


Immunohistochemistry of paraffin-embedded Mouse heart using CLUH Polyclonal Antibody at dilution of 1:100 (40x lens).



Immunofluorescence analysis of NIH-3T3 cells using CLUH Polyclonal Antibody at dilution of 1:100 (40x lens). Blue: DAPI for nuclear staining.

For Research Use Only



Immunofluorescence analysis of U-2 OS cells using CLUH Polyclonal Antibody at dilution of 1:100 (40x lens). Blue: DAPI for nuclear staining.

Preparation & Storage

Storage Store at -20°C. Avoid freeze / thaw cycles.

Background

CLUH (Clustered Mitochondria Homolog) is a Protein Coding gene. Diseases associated with CLUH include Hirschsprung Disease 1. Among its related pathways are Translation Factors. Gene Ontology (GO) annotations related to this gene include mRNA binding.

For Research Use Only