

## TPD52 Polyclonal Antibody

**Catalog No.** E-AB-63316

*Note:* Centrifuge before opening to ensure complete recovery of vial contents.

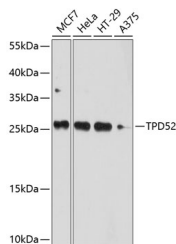
### Description

<b>Reactivity</b>	Human, Mouse, Rat
<b>Immunogen</b>	Recombinant fusion protein of human TPD52 (NP_005070.1).
<b>Host</b>	Rabbit
<b>Isotype</b>	IgG
<b>Purification</b>	Affinity purification
<b>Conjugation</b>	Unconjugated
<b>Buffer</b>	PBS with 0.02% sodium azide, 50% glycerol, pH7.3.

### Applications Recommended Dilution

<b>WB</b>	1:1000-1:2000
<b>IHC</b>	1:50-1:200

### Data

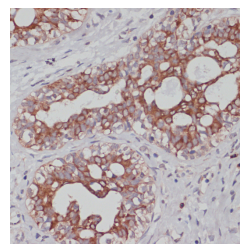


Western blot analysis of extracts of various cell lines using TPD52 Polyclonal Antibody at dilution of 1:1000.

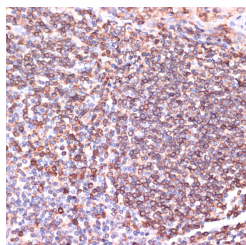
**Observed Mw:26kDa**

**Calculated**

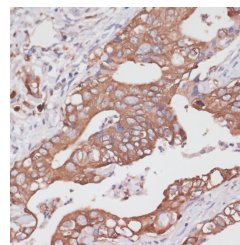
**Mw:16kDa/19kDa/22kDa/24kDa/25kDa/26kDa**



Immunohistochemistry of paraffin-embedded Human mammary cancer using TPD52 Polyclonal Antibody at dilution of 1:100 (40x lens).

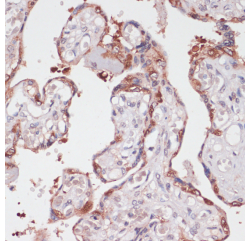


Immunohistochemistry of paraffin-embedded Human tonsil using TPD52 Polyclonal Antibody at dilution of 1:100 (40x lens).

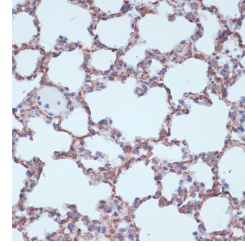


Immunohistochemistry of paraffin-embedded Human colon carcinoma using TPD52 Polyclonal Antibody at dilution of 1:100 (40x lens).

### For Research Use Only



Immunohistochemistry of paraffin-embedded Human placenta using TPD52 Polyclonal Antibody at dilution of 1:100 (40x lens).



Immunohistochemistry of paraffin-embedded Rat lung using TPD52 Polyclonal Antibody at dilution of 1:100 (40x lens).

## Preparation & Storage

**Storage** Store at -20°C. Avoid freeze / thaw cycles.

## Background

The tumor protein D52 (TPD52) family consists of three members, TPD52, TPD52L1 (D53), and TPD52L2 (D54). These small coiled-coil motif bearing proteins interact in hetero- and homomeric fashion. The TPD52 gene maps to chromosome 8q21, and due to amplification, shows frequent overexpression in prostate and breast carcinomas. TPD52 bound to annexin VI in a Ca(2+)-dependent manner, suggesting that these molecules may act in concert to regulate secretory processes in plasma cells.

## For Research Use Only