

14-3-3 sigma Polyclonal Antibody

Catalog No. E-AB-60147

Note: Centrifuge before opening to ensure complete recovery of vial contents.

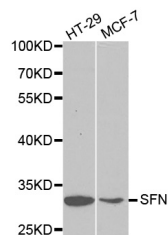
Description

Reactivity	Human,Mouse,Rat
Immunogen	Recombinant protein of human SFN
Host	Rabbit
Isotype	IgG
Purification	Affinity purification
Conjugation	Unconjugated
Buffer	PBS with 0.02% sodium azide and 50% glycerol pH 7.4.

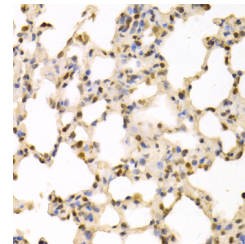
Applications Recommended Dilution

WB 1:500 - 1:2000
IHC 1:50 - 1:200 IF
1:50 - 1:200

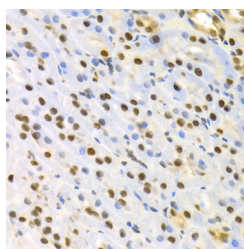
Data



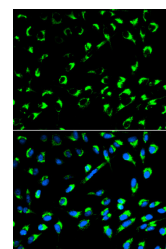
Western blot analysis of extracts of various cell lines with 14-3-3 sigma Polyclonal Antibody
Observed Mw:31kDa
Calculated Mw:24kDa/27kDa



Immunohistochemistry of paraffin-embedded rat lung with 14-3-3 sigma Polyclonal Antibody



Immunohistochemistry of paraffin-embedded rat kidney with 14-3-3 sigma Polyclonal Antibody



Immunofluorescence analysis of MCF-7 cells with 14-3-3 sigma Polyclonal Antibody

Preparation & Storage

Storage Store at -20°C. Avoid freeze / thaw cycles.

For Research Use Only