

LRIG1 Polyclonal Antibody

Catalog No. E-AB-63339

Note: Centrifuge before opening to ensure complete recovery of vial contents.

Description

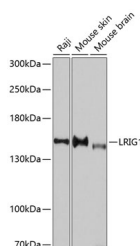
| | |
|---------------------|--|
| Reactivity | Human, Mouse |
| Immunogen | Recombinant fusion protein of human LRIG1 (NP_056356.2). |
| Host | Rabbit |
| Isotype | IgG |
| Purification | Affinity purification |
| Conjugation | Unconjugated |
| Buffer | PBS with 0.02% sodium azide, 50% glycerol, pH7.3. |

Applications

Recommended Dilution

WB 1:1000-1:2000

Data



Western blot analysis of extracts of various cell lines using LRIG1 Polyclonal Antibody at dilution of 1:3000.

Observed Mw:160kDa

Calculated Mw:116kDa/119kDa

Preparation & Storage

Storage Store at -20°C. Avoid freeze / thaw cycles.

Background

Leucine-rich repeats and immunoglobulin-like domains protein 1 is a protein that in humans is encoded by the LRIG1 gene. It encodes a transmembrane protein that has been shown to interact with receptor tyrosine kinases of the EGFR-family, MET and RET. Acts as a feedback negative regulator of signaling by receptor tyrosine kinases, through a mechanism that involves enhancement of receptor ubiquitination and accelerated intracellular degradation.

For Research Use Only