

## ENO1 Polyclonal Antibody

Catalog No. E-AB-60149

**Note:** Centrifuge before opening to ensure complete recovery of vial contents.

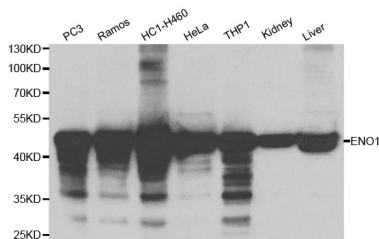
### Description

<b>Reactivity</b>	Human,Mouse,Rat
<b>Immunogen</b>	Recombinant protein of human ENO1
<b>Host</b>	Rabbit
<b>Isotype</b>	IgG
<b>Purification</b>	Affinity purification
<b>Conjugation</b>	Unconjugated
<b>Buffer</b>	PBS with 0.02% sodium azide and 50% glycerol pH 7.4.

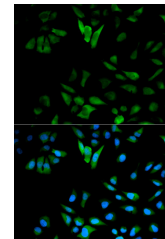
### Applications Recommended Dilution

**WB 1:500 - 1:2000 IF**  
**1:50 - 1:100 IP 1:50 -**  
**1:200**

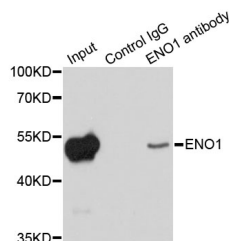
### Data



Western blot analysis of extracts of various cell lines with ENO1 Polyclonal Antibody  
**Observed Mw:47kDa**  
**Calculated Mw:36kDa/47kDa**



Immunofluorescence analysis of HeLa cells with ENO1 Polyclonal Antibody



Immunoprecipitation analysis of 200ug extracts of HeLa cells with ENO1 Polyclonal Antibody

### Preparation & Storage

**Storage** Store at -20°C. Avoid freeze / thaw cycles.

### For Research Use Only

## Background

This gene encodes alpha-enolase, one of three enolase isoenzymes found in mammals. Each isoenzyme is a homodimer composed of 2 alpha, 2 gamma, or 2 beta subunits, and functions as a glycolytic enzyme. Alpha-enolase in addition, functions as a structural lens protein (tau-crystallin) in the monomeric form. Alternative splicing of this gene results in a shorter isoform that has been shown to bind to the c-myc promoter and function as a tumor suppressor. Several pseudogenes have been identified, including one on the long arm of chromosome 1. Alpha-enolase has also been identified as an autoantigen in Hashimoto encephalopathy.