

SNCB Polyclonal Antibody

Catalog No. E-AB-63400

Note: Centrifuge before opening to ensure complete recovery of vial contents.

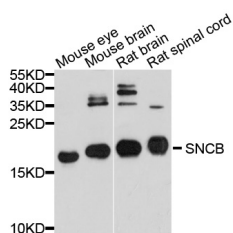
Description

Reactivity	Mouse,Rat
Immunogen	Recombinant protein of human SNCB
Host	Rabbit
Isotype	IgG
Purification	Affinity purification
Conjugation	Unconjugated
Buffer	PBS with 0.02% sodium azide and 50% glycerol pH 7.4.

Applications Recommended Dilution

WB 1:500-1:2000

Data



Western blot analysis of extracts of various cell lines
with SNCB Polyclonal Antibody

Observed Mw:16kDa
Calculated Mw:14kDa

Preparation & Storage

Storage Store at -20°C. Avoid freeze / thaw cycles.

Background

This gene encodes a member of a small family of proteins that inhibit phospholipase D2 and may function in neuronal plasticity. The encoded protein is abundant in lesions of patients with Alzheimer disease. A mutation in this gene was found in individuals with dementia with Lewy bodies. Alternative splicing results in multiple transcript variants.

For Research Use Only