

PDE1A Polyclonal Antibody

Catalog No. E-AB-63406

Note: Centrifuge before opening to ensure complete recovery of vial contents.

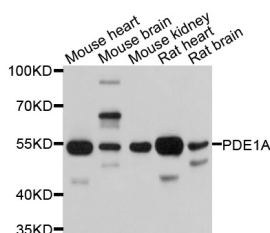
Description

| | |
|---------------------|--|
| Reactivity | Human, Mouse, Rat |
| Immunogen | Recombinant protein of human PDE1A |
| Host | Rabbit |
| Isotype | IgG |
| Purification | Affinity purification |
| Conjugation | Unconjugated |
| Buffer | PBS with 0.02% sodium azide and 50% glycerol pH 7.4. |

Applications Recommended Dilution

WB 1:500-1:2000

Data



Western blot analysis of extracts of various cell lines
with PDE1A Polyclonal Antibody

Observed Mw:55kDa

**Calculated Mw:57kDa/58kDa/59kDa/60kDa/61kDa
/62kDa/63kDa**

Preparation & Storage

Storage Store at -20°C. Avoid freeze / thaw cycles.

For Research Use Only