

MTAP Polyclonal Antibody

Catalog No. E-AB-60153

Note: Centrifuge before opening to ensure complete recovery of vial contents.

Description

Reactivity	Human, Mouse, Rat
Immunogen	Recombinant fusion protein of human MTAP (NP_002442.2).
Host	Rabbit
Isotype	IgG
Purification	Affinity purification
Conjugation	Unconjugated
Buffer	PBS with 0.02% sodium azide, 50% glycerol, pH7.3.

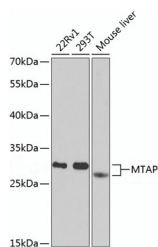
Applications Recommended Dilution

WB 1:500-1:2000 IHC

1:50-1:200 IF

1:50-1:200

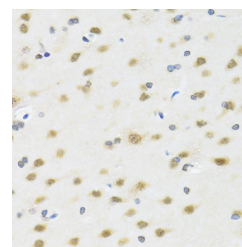
Data



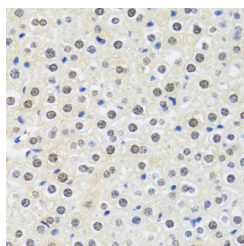
Western blot analysis of extracts of various cell lines using MTAP Polyclonal Antibody at dilution of 1:1000.

Observed Mw:31kDa

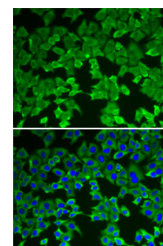
Calculated Mw:26kDa/30kDa/31kDa/32kDa/33kDa/36kDa/38kDa



Immunohistochemistry of paraffin-embedded Rat brain using MTAP Polyclonal Antibody at dilution of 1:100 (40x lens).



Immunohistochemistry of paraffin-embedded Mouse liver using MTAP Polyclonal Antibody at dilution of 1:100 (40x lens).



Immunofluorescence analysis of A-549 cells using MTAP Polyclonal Antibody

For Research Use Only

Preparation & Storage

Storage Store at -20°C. Avoid freeze / thaw cycles.

Background

This gene encodes an enzyme that plays a major role in polyamine metabolism and is important for the salvage of both adenine and methionine. The encoded enzyme is deficient in many cancers because this gene and the tumor suppressor p16 gene are co-deleted. Multiple alternatively spliced transcript variants have been described for this gene, but their full-length natures remain unknown.

For Research Use Only