

## P2RX7 Polyclonal Antibody

**Catalog No.** E-AB-63428

*Note:* Centrifuge before opening to ensure complete recovery of vial contents.

### Description

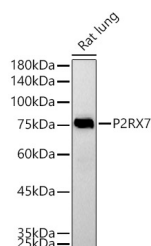
|                     |   |
|---------------------|---|
| <b>Reactivity</b>   | Mouse,Rat                                     |
| <b>Immunogen</b>    | Recombinant fusion protein of human P2RX7     |
| <b>Host</b>         | Rabbit  |
| <b>Isotype</b>      | IgG   |
| <b>Purification</b> | Affinity purification                         |
| <b>Conjugation</b>  | Unconjugated                                  |
| <b>Buffer</b>       | PBS with 0.05% proclin300,50% glycerol,pH7.3. |

### Applications

### Recommended Dilution

**WB** 1:1000-1:2000

### Data



Western blot analysis of extracts of Rat lung using P2RX7 Polyclonal Antibody at 1:500 dilution.

**Observed Mw:75KDa**

**Calculated Mw:14kDa/31kDa/35kDa/41kDa/49kDa  
/58kDa/68kDa**

### Preparation & Storage

**Storage** Store at -20°C. Avoid freeze / thaw cycles.

### Background

The product of this gene belongs to the family of purinoceptors for ATP. This receptor functions as a ligand-gated ion channel and is responsible for ATP-dependent lysis of macrophages through the formation of membrane pores permeable to large molecules. Activation of this nuclear receptor by ATP in the cytoplasm may be a mechanism by which cellular activity can be coupled to changes in gene expression. Multiple alternatively spliced variants have been identified, most of which fit nonsense-mediated decay (NMD) criteria.

### For Research Use Only