

UBE2N Polyclonal Antibody

Catalog No. E-AB-63431

Note: Centrifuge before opening to ensure complete recovery of vial contents.

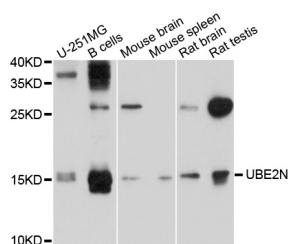
Description

| | |
|---------------------|--|
| Reactivity | Human,Mouse,Rat |
| Immunogen | Recombinant protein of human UBE2N |
| Host | Rabbit |
| Isotype | IgG |
| Purification | Affinity purification |
| Conjugation | Unconjugated |
| Buffer | PBS with 0.02% sodium azide and 50% glycerol pH 7.4. |

Applications Recommended Dilution

WB 1:1000-1:2000

Data



Western blot analysis of extracts of various cell lines with UBE2N Polyclonal Antibody

Observed Mw:17kDa
Calculated Mw:17kDa

Preparation & Storage

Storage Store at -20°C. Avoid freeze / thaw cycles.

Background

The modification of proteins with ubiquitin is an important cellular mechanism for targeting abnormal or short-lived proteins for degradation. Ubiquitination involves at least three classes of enzymes: ubiquitin-activating enzymes, or E1s, ubiquitin-conjugating enzymes, or E2s, and ubiquitin-protein ligases, or E3s. This gene encodes a member of the E2 ubiquitin-conjugating enzyme family. Studies in mouse suggest that this protein plays a role in DNA postreplication repair.

For Research Use Only