

## USP24 Polyclonal Antibody

Catalog No. E-AB-63446

**Note:** Centrifuge before opening to ensure complete recovery of vial contents.

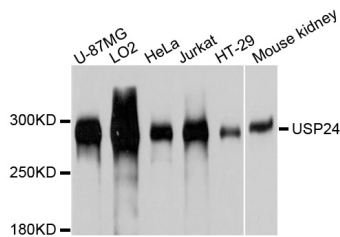
### Description

|                     |  |
|---------------------|--|
| <b>Reactivity</b>   | Human,Mouse,Rat                                      |
| <b>Immunogen</b>    | Recombinant protein of human USP24                   |
| <b>Host</b>         | Rabbit   |
| <b>Isotype</b>      | IgG  |
| <b>Purification</b> | Affinity purification                                |
| <b>Conjugation</b>  | Unconjugated   |
| <b>Buffer</b>       | PBS with 0.02% sodium azide and 50% glycerol pH 7.4. |

### Applications Recommended Dilution

WB 1:1000 - 1:2000

### Data



Western blot analysis of extracts of various cell lines  
with USP24 Polyclonal Antibody

**Observed Mw:294kDa**  
**Calculated Mw:294kDa**

### Preparation & Storage

**Storage** Store at -20°C. Avoid freeze / thaw cycles.

### For Research Use Only