

## LYZL6 Polyclonal Antibody

**Catalog No.** E-AB-60167

*Note:* Centrifuge before opening to ensure complete recovery of vial contents.

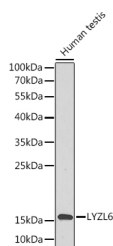
### Description

|                     |  |
|---------------------|--|
| <b>Reactivity</b>   | Human  |
| <b>Immunogen</b>    | Recombinant fusion protein of human LYZL6 (NP_065159.1). |
| <b>Host</b>         | Rabbit   |
| <b>Isotype</b>      | IgG  |
| <b>Purification</b> | Affinity purification                                    |
| <b>Conjugation</b>  | Unconjugated   |
| <b>Buffer</b>       | PBS with 0.02% sodium azide, 50% glycerol, pH7.3.        |

### Applications Recommended Dilution

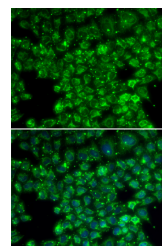
**WB 1:500-1:2000 IF**  
**1:50-1:200**

### Data



Western blot analysis of extracts of Human testis using LYZL6 Polyclonal Antibody.

**Observed Mw:17kDa**  
**Calculated Mw:16kDa**



Immunofluorescence analysis of U2OS cells using LYZL6 Polyclonal Antibody

### Preparation & Storage

**Storage** Store at -20°C. Avoid freeze / thaw cycles.

### Background

This gene encodes a member of the C-type lysozyme/alpha-lactalbumin family. C-type lysozymes are bacteriolytic factors that play a role in host defense, whereas alpha-lactalbumins mediate lactose biosynthesis. The encoded protein contains catalytic residues characteristic of C-type lysozymes and may play a role in male reproduction. Alternatively spliced transcript variants have been observed for this gene.

### For Research Use Only