

RNASE11 Polyclonal Antibody

Catalog No. E-AB-60180

Note: Centrifuge before opening to ensure complete recovery of vial contents.

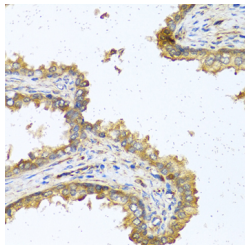
Description

Reactivity	Human,Mouse
Immunogen	Recombinant fusion protein of human RNASE11 (NP_660293.1).
Host	Rabbit
Isotype	IgG
Purification	Affinity purification
Conjugation	Unconjugated
Buffer	PBS with 0.02% sodium azide, 50% glycerol, pH7.3.

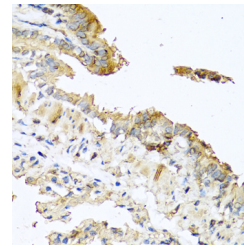
Applications Recommended Dilution

IHC 1:50-1:100

Data



Immunohistochemistry of paraffin-embedded Human prostate using RNASE11 Polyclonal Antibody at dilution of 1:100 (40x lens).



Immunohistochemistry of paraffin-embedded Mouse lung using RNASE11 Polyclonal Antibody at dilution of 1:100 (40x lens).

Preparation & Storage

Storage Store at -20°C. Avoid freeze / thaw cycles.

Background

RNASE11 (Ribonuclease A Family Member 11 (Inactive)) is a Protein Coding gene. Diseases associated with RNASE11 include Testicular Leukemia. Gene Ontology (GO) annotations related to this gene include nucleic acid binding and ribonuclease activity. An important paralog of this gene is RNASE9.

For Research Use Only