

Bcl-2 Polyclonal Antibody

Catalog No. E-AB-64067

Note: Centrifuge before opening to ensure complete recovery of vial contents.

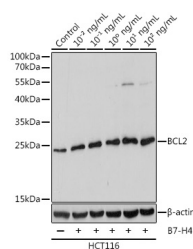
Description

Reactivity	Human, Mouse, Rat
Immunogen	A synthetic peptide of human Bcl-2 (NP_000624.2).
Host	Rabbit
Isotype	IgG
Purification	Affinity purification
Conjugation	Unconjugated
Buffer	PBS with 0.02% sodium azide, 50% glycerol, pH7.3.

Applications Recommended Dilution

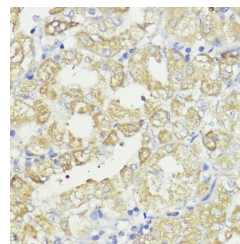
WB	1:500-1:2000
IHC	1:50-1:200
IF	1:50-1:200

Data

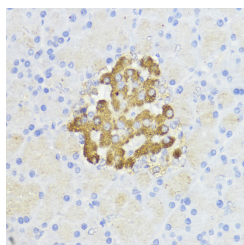


Western blot analysis of extracts of HCT116 cells using Bcl-2 Polyclonal Antibody at dilution of 1:1000. HCT116 cells treated with different concentrations of B7-H4.

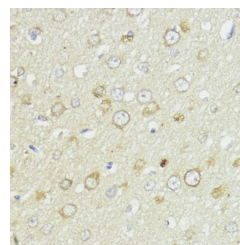
Observed Mw:24kDa/28kDa
Calculated Mw:22kDa/26kDa



Immunohistochemistry of paraffin-embedded Human stomach using Bcl-2 Polyclonal Antibody at dilution of 1:100 (40x lens).

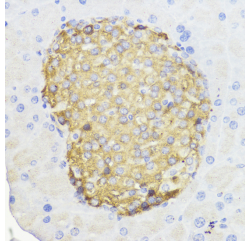


Immunohistochemistry of paraffin-embedded Rat pancreas using Bcl-2 Polyclonal Antibody at dilution of 1:100 (40x lens).

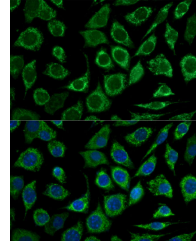


Immunohistochemistry of paraffin-embedded Rat brain using Bcl-2 Polyclonal Antibody at dilution of 1:100 (40x lens).

For Research Use Only



Immunohistochemistry of paraffin-embedded Mouse pancreas using Bcl-2 Polyclonal Antibody at dilution of 1:100 (40x lens).



Immunofluorescence analysis of L929 cells using Bcl-2 Polyclonal Antibody at dilution of 1:100. Blue: DAPI for nuclear staining.

Preparation & Storage

Storage Store at -20°C. Avoid freeze / thaw cycles.

Background

This gene encodes an integral outer mitochondrial membrane protein that blocks the apoptotic death of some cells such as lymphocytes. Constitutive expression of BCL2, such as in the case of translocation of BCL2 to Ig heavy chain locus, is thought to be the cause of follicular lymphoma. Alternative splicing results in multiple transcript variants.