

(KO Validated) EZH2 Polyclonal Antibody

Catalog No. E-AB-63477

Note: Centrifuge before opening to ensure complete recovery of vial contents.

Description

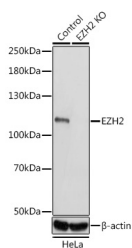
Reactivity	Human, Mouse
Immunogen	Recombinant fusion protein of human EZH2
Host	Rabbit
Isotype	IgG
Purification	Affinity purification
Conjugation	Unconjugated
Buffer	PBS with 0.01% thiomersal, 50% glycerol, pH 7.3.

Applications

Recommended Dilution

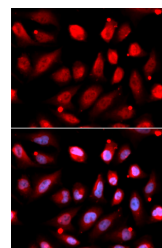
WB	1:500-1:2000
IF	1:50-1:200

Data



Western blot analysis of extracts of various cell lines using EZH2/KMT6 Polyclonal Antibody at 1:1000 dilution.

Observed Mw: 78-110kDa
Calculated
Mw: 79kDa/81kDa/84kDa/85kDa/86kDa



Immunofluorescence analysis of U2OS cells using EZH2/KMT6 Polyclonal Antibody

Preparation & Storage

Storage Store at -20°C. Avoid freeze / thaw cycles.

Background

This gene encodes a member of the Polycomb-group (PcG) family. PcG family members form multimeric protein complexes, which are involved in maintaining the transcriptional repressive state of genes over successive cell generations. This protein associates with the embryonic ectoderm development protein, the VAV1 oncoprotein, and the X-linked nuclear protein. This protein may play a role in the hematopoietic and central nervous systems. Multiple alternatively spliced transcript variants encoding distinct isoforms have been identified for this gene.

For Research Use Only