

Note: Centrifuge before opening to ensure complete recovery of vial contents.

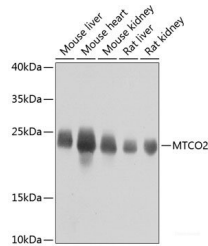
Description

Reactivity	Human,Mouse,Rat
Immunogen	A synthetic peptide of mouse MTCO2 (NP_904331.1).
Host	Rabbit
Isotype	IgG
Purification	Affinity purification
Conjugation	Unconjugated
Formulation	PBS with 0.02% sodium azide, 50% glycerol, pH7.3.

Applications Recommended Dilution

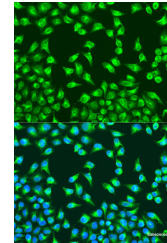
WB	1:500-1:2000
IF	1:50-1:200

Data



Western blot analysis of extracts of various cell lines using MTCO2 Polyclonal Antibody at dilution of 1:800.

Observed Mw:24kDa
Calculated Mw:25kDa



Immunofluorescence analysis of U2OS cells using MTCO2 Polyclonal Antibody at dilution of 1:100. Blue: DAPI for nuclear staining.

Preparation & Storage

Storage Store at -20°C. Avoid freeze / thaw cycles.

Background

MT-CO2 (Mitochondrially Encoded Cytochrome C Oxidase II) is a Protein Coding gene. Diseases associated with MT-CO2 include Mitochondrial Complex Iv Deficiency and Mitochondrial Disorders. Among its related pathways are Regulation of Wnt-mediated beta catenin signaling and target gene transcription and Respiratory electron transport, ATP synthesis by chemiosmotic coupling, and heat production by uncoupling proteins.. Gene Ontology (GO) annotations related to this gene include oxidoreductase activity and cytochrome-c oxidase activity.

For Research Use Only

A Reliable Research Partner in Life Science and Medicine

Toll-free: 1-888-852-8623

Web: www.elabscience.com

Tel: 1-832-243-6086

Email: techsupport@elabscience.com

Fax: 1-832-243-6017