

MAP1LC3B Polyclonal Antibody

Catalog No. E-AB-63507

Note: Centrifuge before opening to ensure complete recovery of vial contents.

Description

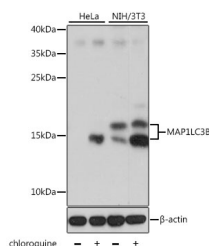
Reactivity	Human, Mouse, Rat, Pig
Immunogen	A synthetic peptide of human MAP1LC3B
Host	Rabbit
Isotype	IgG
Purification	Affinity purification
Conjugation	Unconjugated
Buffer	PBS with 0.02% sodium azide and 50% glycerol pH 7.4.

Applications

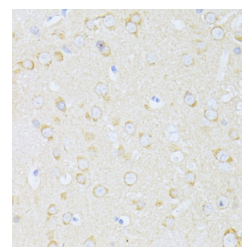
Recommended Dilution

WB 1:500 - 1:2000
IHC 1:50 - 1:200 IF
1:50 - 1:200

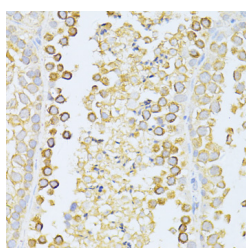
Data



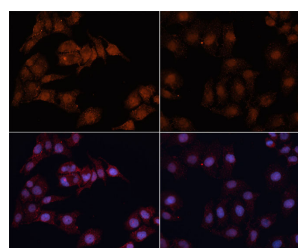
Western blot analysis of extracts of various cell lines with MAP1LC3B Polyclonal Antibody
Observed Mw:14kDa, 16kDa
Calculated Mw:14kDa



Immunohistochemistry of paraffin-embedded rat brain with MAP1LC3B Polyclonal Antibody



Immunohistochemistry of paraffin-embedded mouse testis with MAP1LC3B Polyclonal Antibody



Immunofluorescence analysis of HeLa cells with MAP1LC3B Polyclonal Antibody

Preparation & Storage

Storage Store at -20°C. Avoid freeze / thaw cycles.

For Research Use Only

Background

The product of this gene is a subunit of neuronal microtubule-associated MAP1A and MAP1B proteins, which are involved in microtubule assembly and important for neurogenesis. Studies on the rat homolog implicate a role for this gene in autophagy, a process that involves the bulk degradation of cytoplasmic component.