

EMD Polyclonal Antibody

Catalog No. E-AB-60200

Note: Centrifuge before opening to ensure complete recovery of vial contents.

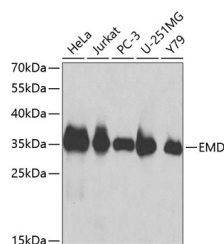
Description

Reactivity	Human, Mouse
Immunogen	Recombinant fusion protein of human EMD (NP_000108.1).
Host	Rabbit
Isotype	IgG
Purification	Affinity purification
Conjugation	Unconjugated
Buffer	PBS with 0.02% sodium azide, 50% glycerol, pH7.3.

Applications Recommended Dilution

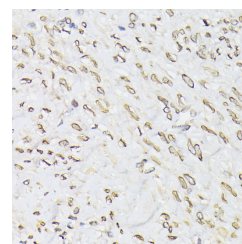
WB 1:500-1:2000 IHC
1:50-1:200 IF
1:20-1:100

Data

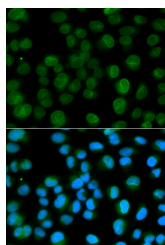


Western blot analysis of extracts of various cell lines using EMD Polyclonal Antibody at dilution of 1:1000.

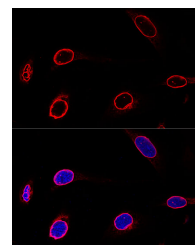
Observed Mw:35kDa
Calculated Mw:28kDa



Immunohistochemistry of paraffin-embedded Human uterus using EMD Polyclonal Antibody at dilution of 1:100 (40x lens).



Immunofluorescence analysis of HeLa cells using EMD Polyclonal Antibody



Confocal immunofluorescence analysis of U-2 OS cells using EMD Polyclonal Antibody at dilution of 1:100. Blue: DAPI for nuclear staining.

Preparation & Storage

For Research Use Only

Storage Store at -20°C. Avoid freeze / thaw cycles.

Background

Emerin is a serine-rich nuclear membrane protein and a member of the nuclear lamina-associated protein family. It mediates membrane anchorage to the cytoskeleton. Dreifuss-Emery muscular dystrophy is an X-linked inherited degenerative myopathy resulting from mutation in the emerin gene.