

Catenin beta Polyclonal Antibody

Catalog No. E-AB-63514

Note: Centrifuge before opening to ensure complete recovery of vial contents.

Description

Reactivity	Human, Mouse, Rat
Immunogen	A synthetic peptide of human CTNNB1
Host	Rabbit
Isotype	IgG
Purification	Affinity purification
Conjugation	Unconjugated
Buffer	PBS with 0.02% sodium azide and 50% glycerol pH 7.4.

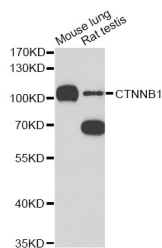
Applications

Recommended Dilution

WB 1:500 - 1:2000

IHC 1:50 - 1:100

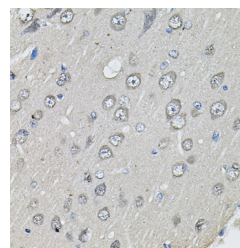
Data



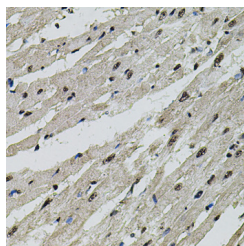
Western blot analysis of extracts of various cell lines with Catenin beta Polyclonal Antibody

Observed Mw:105kDa

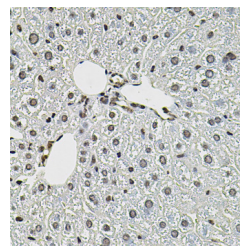
Calculated Mw:9kDa/85kDa



Immunohistochemistry of paraffin-embedded rat brain with Catenin beta Polyclonal Antibody



Immunohistochemistry of paraffin-embedded rat heart with Catenin beta Polyclonal Antibody



Immunohistochemistry of paraffin-embedded mouse liver with Catenin beta Polyclonal Antibody

Preparation & Storage

Storage Store at -20°C. Avoid freeze / thaw cycles.

Background

For Research Use Only

The protein encoded by this gene is part of a complex of proteins that constitute adherens junctions (AJs). AJs are necessary for the creation and maintenance of epithelial cell layers by regulating cell growth and adhesion between cells. The encoded protein also anchors the actin cytoskeleton and may be responsible for transmitting the contact inhibition signal that causes cells to stop dividing once the epithelial sheet is complete. Finally, this protein binds to the product of the APC gene, which is mutated in adenomatous polyposis of the colon. Mutations in this gene are a cause of colorectal cancer (CRC), pilomatrixoma (PTR), medulloblastoma (MDB), and ovarian cancer. Alternative splicing results in multiple transcript variants.