

## IκB alpha Polyclonal Antibody

Catalog No. E-AB-63526

**Note:** Centrifuge before opening to ensure complete recovery of vial contents.

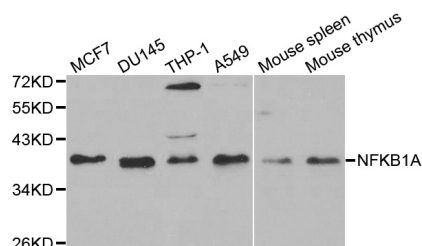
### Description

<b>Reactivity</b>	Human, Mouse, Rat
<b>Immunogen</b>	Recombinant protein of human NFKBIA
<b>Host</b>	Rabbit
<b>Isotype</b>	IgG
<b>Purification</b>	Affinity purification
<b>Conjugation</b>	Unconjugated
<b>Buffer</b>	PBS with 0.02% sodium azide and 50% glycerol pH 7.4.

### Applications Recommended Dilution

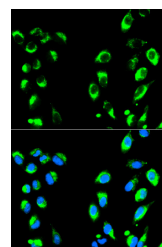
**WB 1:500 - 1:2000 IF**  
**1:20 - 1:50 IP 1:20 -**  
**1:50**

### Data

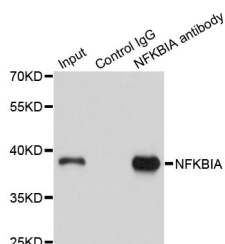


Western blot analysis of extracts of various cell lines with IκB alpha Polyclonal Antibody

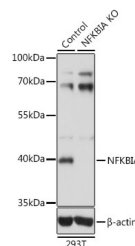
**Observed Mw:36kDa**  
**Calculated Mw:35kDa**



Immunofluorescence analysis of HeLa cells with IκB alpha Polyclonal Antibody



Immunoprecipitation analysis of 150ug extracts of A549 cells with IκB alpha Polyclonal Antibody



Western blot analysis of extracts from normal (control) and IκB alpha knockout (KO) 293T cells, using IκB alpha Polyclonal Antibody at dilution of 1:1000.

### Preparation & Storage

#### For Research Use Only

**Storage** Store at -20°C. Avoid freeze / thaw cycles.

## Background

This gene encodes a member of the NF-kappa-B inhibitor family, which contain multiple ankrin repeat domains. The encoded protein interacts with REL dimers to inhibit NF-kappa-B/REL complexes which are involved in inflammatory responses. The encoded protein moves between the cytoplasm and the nucleus via a nuclear localization signal and CRM1-mediated nuclear export. Mutations in this gene have been found in ectodermal dysplasia anhidrotic with T-cell immunodeficiency autosomal dominant disease.