

MAD1L1 Polyclonal Antibody

Catalog No. E-AB-60215

Note: Centrifuge before opening to ensure complete recovery of vial contents.

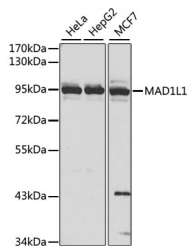
Description

Reactivity	Human
Immunogen	Recombinant fusion protein of human MAD1L1
Host	Rabbit
Isotype	IgG
Purification	Affinity purification
Conjugation	Unconjugated
Buffer	PBS with 0.02% sodium azide, 50% glycerol, pH7.3.

Applications Recommended Dilution

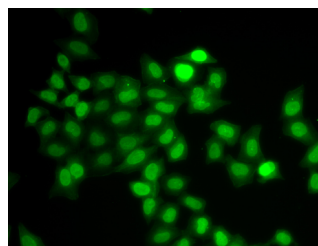
WB	1:500-1:2000
IF	1:50-1:200

Data



Western blot analysis of extracts of various cell lines using MAD1/MAD1/MAD1L1 Polyclonal Antibody at 1:1000 dilution.

Observed Mw:95kDa
Calculated Mw:72kDa/83kDa



Immunofluorescence analysis of U2OS cells using MAD1/MAD1/MAD1L1 Polyclonal Antibody

Preparation & Storage

Storage Store at -20°C. Avoid freeze / thaw cycles.

Background

MAD1L1 is a component of the mitotic spindle-assembly checkpoint that prevents the onset of anaphase until all chromosome are properly aligned at the metaphase plate. MAD1L1 functions as a homodimer and interacts with MAD2L1. MAD1L1 may play a role in cell cycle control and tumor suppression. Alternative splicing results in multiple transcript variants.

For Research Use Only