

(KO Validated) EGFR Polyclonal Antibody

Catalog No. E-AB-63557

Note: Centrifuge before opening to ensure complete recovery of vial contents.

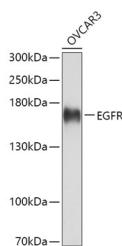
Description

Reactivity	Human, Mouse, Rat
Immunogen	Recombinant fusion protein of human EGFR (NP_005219.2).
Host	Rabbit
Isotype	IgG
Purification	Affinity purification
Conjugation	Unconjugated
Buffer	PBS with 0.02% sodium azide, 50% glycerol, pH7.3.

Applications Recommended Dilution

WB	1:500-1:2000
IF	1:50-1:200

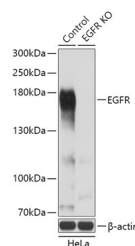
Data



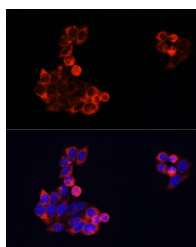
Western blot analysis of extracts of OVCAR3 cells using EGFR Polyclonal Antibody at dilution of 1:3000.

Observed Mw:175kDa

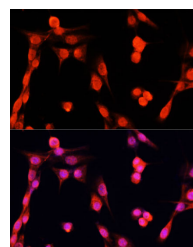
Calculated Mw:44kDa/69kDa/77kDa/134kDa



Western blot analysis of extracts from normal (control) and EGFR knockout (KO) HeLa cells using EGFR Polyclonal Antibody at dilution of 1:3000.

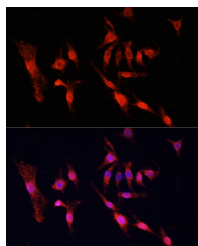


Immunofluorescence analysis of HeLa cells using EGFR Polyclonal Antibody at dilution of 1:100.
Blue: DAPI for nuclear staining.



Immunofluorescence analysis of NIH/3T3 cells using EGFR Polyclonal Antibody at dilution of 1:100.
Blue: DAPI for nuclear staining.

For Research Use Only



Immunofluorescence analysis of PC12 cells using
EGFR Polyclonal Antibody at dilution of 1:100.
Blue: DAPI for nuclear staining.

Preparation & Storage

Storage Store at -20°C. Avoid freeze / thaw cycles.

Background

The protein encoded by this gene is a transmembrane glycoprotein that is a member of the protein kinase superfamily. This protein is a receptor for members of the epidermal growth factor family. EGFR is a cell surface protein that binds to epidermal growth factor. Binding of the protein to a ligand induces receptor dimerization and tyrosine autophosphorylation and leads to cell proliferation. Mutations in this gene are associated with lung cancer.