

## LAMTOR1 Polyclonal Antibody

**Catalog No.** E-AB-63569

*Note:* Centrifuge before opening to ensure complete recovery of vial contents.

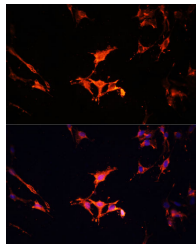
### Description

<b>Reactivity</b>	Human, Mouse, Rat
<b>Immunogen</b>	Recombinant fusion protein of human LAMTOR1 (NP_060377.1).
<b>Host</b>	Rabbit
<b>Isotype</b>	IgG
<b>Purification</b>	Affinity purification
<b>Conjugation</b>	Unconjugated
<b>Buffer</b>	PBS with 0.02% sodium azide, 50% glycerol, pH7.3.

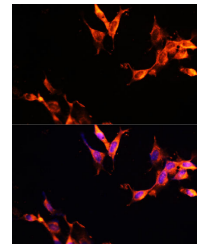
### Applications Recommended Dilution

**IF** 1:50-1:100

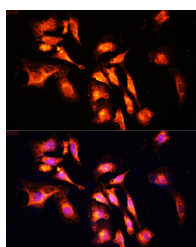
### Data



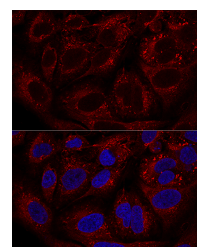
Immunofluorescence analysis of C6 cells using LAMTOR1 Polyclonal Antibody at dilution of 1:100 (40x lens). Blue: DAPI for nuclear staining.



Immunofluorescence analysis of NIH-3T3 cells using LAMTOR1 Polyclonal Antibody at dilution of 1:100 (40x lens). Blue: DAPI for nuclear staining.



Immunofluorescence analysis of U-2 OS cells using LAMTOR1 Polyclonal Antibody at dilution of 1:100 (40x lens). Blue: DAPI for nuclear staining.



Confocal immunofluorescence analysis of U2OS cells using LAMTOR1 Polyclonal Antibody at dilution of 1:100. Blue: DAPI for nuclear staining.

### Preparation & Storage

**Storage** Store at -20°C. Avoid freeze / thaw cycles.

### Background

LAMTOR1 (Late Endosomal/Lysosomal Adaptor, MAPK And MTOR Activator 1) is a Protein Coding gene. Diseases

### For Research Use Only

associated with LAMTOR1 include Cone-Rod Dystrophy 2. Among its related pathways are Signaling by GPCR and RET signaling. Gene Ontology (GO) annotations related to this gene include guanyl-nucleotide exchange factor activity and protein-containing complex scaffold activity.