

# Nestin Polyclonal Antibody

Catalog Number:E-AB-63599

**Note:** Centrifuge before opening to ensure complete recovery of vial contents.

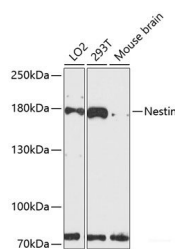
## Description

<b>Reactivity</b>	Human,Mouse,Rat
<b>Immunogen</b>	Recombinant fusion protein of human Nestin (NP_006608.1).
<b>Host</b>	Rabbit
<b>Isotype</b>	IgG
<b>Purification</b>	Affinity purification
<b>Conjugation</b>	Unconjugated
<b>Formulation</b>	PBS with 0.02% sodium azide, 50% glycerol, pH7.3.

## Applications Recommended Dilution

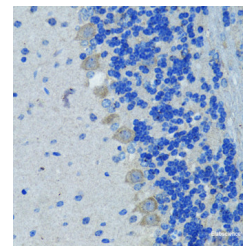
<b>WB</b>	1:500-1:1000
<b>IHC</b>	1:50-1:100
<b>IF</b>	1:50-1:100

## Data

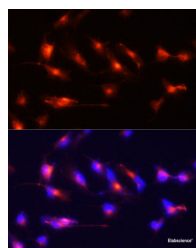


Western blot analysis of extracts of various cell lines using Nestin Polyclonal Antibody at dilution of 1:3000.

**Observed Mw:180kDa**  
**Calculated Mw:177kDa**



Immunohistochemistry of paraffin-embedded Mouse brain using Nestin Polyclonal Antibody at dilution of 1:100 (40x lens).



Immunofluorescence analysis of U-251MG cells using Nestin Polyclonal Antibody at dilution of 1:100 (20x lens). Blue: DAPI for nuclear staining.

## Preparation & Storage

**Storage** Store at -20°C. Avoid freeze / thaw cycles.

## Background

## For Research Use Only

A Reliable Research Partner in Life Science and Medicine

Toll-free: 1-888-852-8623

Web: [www.elabscience.com](http://www.elabscience.com)

Tel: 1-832-243-6086

Email: [techsupport@elabscience.com](mailto:techsupport@elabscience.com)

Fax: 1-832-243-6017

# Nestin Polyclonal Antibody

Catalog Number: E-AB-63599



---

This gene encodes a member of the intermediate filament protein family and is expressed primarily in nerve cells.

---

## For Research Use Only

A Reliable Research Partner in Life Science and Medicine

Toll-free: 1-888-852-8623

Web: [www.elabscience.com](http://www.elabscience.com)

Tel: 1-832-243-6086

Email: [techsupport@elabscience.com](mailto:techsupport@elabscience.com)

Fax: 1-832-243-6017