

POLK Polyclonal Antibody

Catalog No. E-AB-64108

Note: Centrifuge before opening to ensure complete recovery of vial contents.

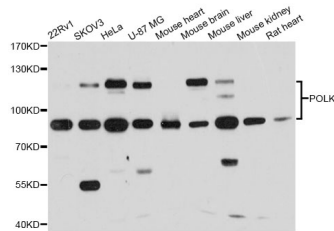
Description

Reactivity	Human, Mouse, Rat
Immunogen	A synthetic peptide of human POLK
Host	Rabbit
Isotype	IgG
Purification	Affinity purification
Conjugation	Unconjugated
Buffer	PBS with 0.02% sodium azide and 50% glycerol pH 7.4.

Applications Recommended Dilution

WB 1:500-1:2000

Data



Western blot analysis of extracts of various cell lines
with POLK Polyclonal Antibody
Observed Mw: 90kDa, 120kDa
Calculated Mw: 42kDa/52kDa/54kDa/55kDa/76kDa
/88kDa/98kDa

Preparation & Storage

Storage Store at -20°C. Avoid freeze / thaw cycles.

For Research Use Only