

Note: Centrifuge before opening to ensure complete recovery of vial contents.

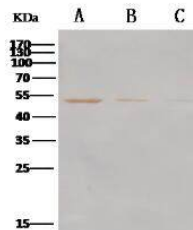
Description

Reactivity	MERS-CoV
Immunogen	A synthetic peptide corresponding to the center region of MERS-CoV (NCoV / Novel coronavirus) Nucleocapsid Protein (NP protein)
Host	Rabbit
Isotype	IgG
Purification	Antigen Affinity
Conjugation	Unconjugated
Formulation	0.2 µm filtered solution in PBS

Applications Recommended Dilution

WB	1:1000-1:5000
-----------	---------------

Data



Western Blot analysis of Recombinant MERS-CoV Nucleoprotein / NP protein (His Tag)(PKSV030235 with 500ng, 200ng and 100ng) using Anti-MERS-CoV Nucleocapsid Protein Polyclonal Antibody at dilution of 1:1000.

Preparation & Storage

Storage Store at -20°C. Avoid freeze / thaw cycles.

Background

Coronaviruses are enveloped viruses with a positive-sense RNA genome and with a nucleocapsid of helical symmetry. Coronavirus nucleoproteins localize to the cytoplasm and the nucleolus, a subnuclear structure, in both virus-infected primary cells and in cells transfected with plasmids that express N protein. Coronavirus N protein is required for coronavirus RNA synthesis, and has RNA chaperone activity that may be involved in template switch. Nucleocapsid protein is a most abundant protein of coronavirus. During virion assembly, N protein binds to viral RNA and leads to formation of the helical nucleocapsid. Nucleocapsid protein is a highly immunogenic phosphoprotein also implicated in viral genome replication and in modulating cell signaling pathways. Because of the conservation of N protein sequence and its strong immunogenicity, the N protein of coronavirus is chosen as a diagnostic tool.

For Research Use Only

A Reliable Research Partner in Life Science and Medicine

Toll-free: 1-888-852-8623

Web: www.elabscience.com

Tel: 1-832-243-6086

Email: techsupport@elabscience.com

Fax: 1-832-243-6017