

# Anti-SARS-CoV Spike S1 Monoclonal Antibody

Catalog Number:E-AB-V1350



**Note:** Centrifuge before opening to ensure complete recovery of vial contents.

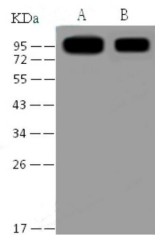
## Description

<b>Reactivity</b>	SARS
<b>Immunogen</b>	Recombinant SARS-CoV S1 Protein (His Tag) [Active]
<b>Host</b>	Mouse
<b>Isotype</b>	IgG2a
<b>Clone</b>	08
<b>Purification</b>	Protein A Affinity
<b>Conjugation</b>	Unconjugated
<b>Formulation</b>	0.2 µm filtered solution in PBS

## Applications Recommended Dilution

<b>WB</b>	1:1000-1:5000
<b>ELISA</b>	1:1000-1:2000

## Data



Western Blot analysis of Recombinant SARS-CoV S1 Protein (His Tag)(PKSV030101 with 30ng and 5ng) using Anti-SARS-CoV Spike S1 Monoclonal Antibody at dilution of 1:1000.

## Preparation & Storage

**Storage** Store at -20°C. Avoid freeze / thaw cycles.

## Background

The spike (S) glycoprotein of coronaviruses contains protrusions that will only bind to certain receptors on the host cell. Known receptors bind S1 are ACE2, angiotensin-converting enzyme 2; DPP4, dipeptidyl peptidase-4; APN, aminopeptidase N; CEACAM, carcinoembryonic antigen-related cell adhesion molecule 1; Sia, sialic acid; O-ac Sia, O-acetylated sialic acid. The spike is essential for both host specificity and viral infectivity. The term 'peplomer' is typically used to refer to a grouping of heterologous proteins on the virus surface that function together. The spike (S) glycoprotein of coronaviruses is known to be essential in the binding of the virus to the host cell at the advent of the infection process.

## For Research Use Only

A Reliable Research Partner in Life Science and Medicine

Toll-free: 1-888-852-8623

Web: [www.elabscience.com](http://www.elabscience.com)

Tel: 1-832-243-6086

Email: [techsupport@elabscience.com](mailto:techsupport@elabscience.com)

Fax: 1-832-243-6017