

Elab Fluor® 647 Anti-Mouse IL-17A Antibody[TC11-18H10.1]

Catalog No.	E-AB-F1199M	Reactivity	Mouse
Storage	Store at 2~8°C, Avoid freeze / thaw cycles	Applications	ICFCM

Important Note: Centrifuge before opening to ensure complete recovery of vial contents.

Antigen Information

Alternate Names	Interleukin-17A, IL-17, IL-17A, Cytotoxic T-lymphocyte-associated antigen 8, CTLA-8, CTLA8
Uniprot ID	Q62386
Background	IL-17, also known as CTLA-8, is a T cell-expressed pleiotropic cytokine that exhibits a high degree of homology to a protein encoded by the ORF13 gene of herpes virus Saimiri. IL-17 is produced by Th cells (Th17) that are distinct from the traditional Th1- and Th2-cell subsets. IL-23 plays an important role in triggering IL-17 production. Both recombinant and natural IL-17 have been shown to exist as disulfide linked homodimers. IL-17 exhibits multiple biological activities on a variety of cells including: the induction of IL-6 and IL-8 production in fibroblasts, activation of NF-κB, and costimulation of T cell proliferation. IL-17 is an essential inflammatory mediator in the development of autoimmune diseases. Neutralization of IL-17 with monoclonal antibody is able to ameliorate the disease course.

Product Details

Form	Liquid
Size	50Tests/100Tests/100Tests×2
Clone No.	TC11-18H10.1
Host	Rat
Isotype	Rat IgG1, κ
Reactivity	Mouse
Application	ICFCM
Isotype Control	Elab Fluor® 647 Rat IgG1, κ Isotype Control[HRPN] [Product E-AB-F09822M]
Storage Buffer	Phosphate buffered solution, pH 7.2, containing 0.09% stabilizer and 1% protein protectant.
Shipping	Biological ice pack at 4 °C
Stability & Storage	Keep as concentrated solution. Store at 2~8°C and protected from prolonged exposure to light. Do not freeze. This product is guaranteed up to one year from purchase.

For Research Use Only

Fluorophore

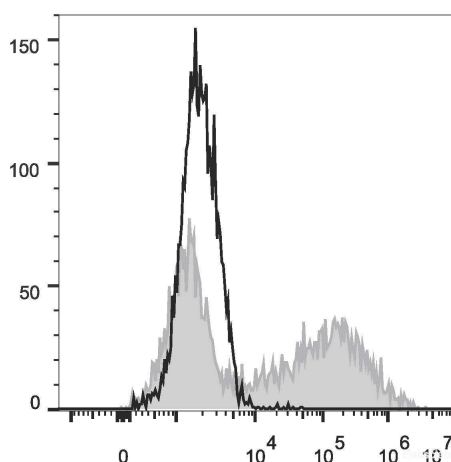
Conjugation: Elab Fluor® 647

Elab Fluor® 647 is designed to be excited by the Red laser (627-640 nm) and detected using an optical filter centered near 670 nm (e.g., a 660/20 nm bandpass filter).

Recommended usage

Each lot of this antibody is quality control tested by flow cytometric analysis. **The amount of the reagent is suggested to be used 5 µL of antibody per test (million cells in 100 µL staining volume or per 100 µL of whole blood).** Please check your vial before the experiment. Since applications vary, the appropriate dilutions must be determined for individual use.

Product data



HEK293T cells transiently transfected with pcDNA3.1 plasmid encoding Mouse IL-17A gene are stained with Elab Fluor® 647 Anti-Mouse IL-17A Antibody (filled gray histogram) or Elab Fluor® 647 Rat IgG1, κ Isotype Control (empty black histogram).

Related Information

1. Sample Preparation for Flow Cytometry <https://www.elabscience.com/List-detail-5594.html>
2. Staining Intracellular Antigens for Flow Cytometry <https://www.elabscience.com/List-detail-5570.html>
3. Flow Cytometry Troubleshooting Tips <https://www.elabscience.com/List-detail-5593.html>
4. How to select the appropriate detection channel through the spectrogram? <https://www.elabscience.com/List-detail-459742.html>