

## Elab Fluor® 488 Anti-Human CD73 Antibody[AD2]

<b>Catalog No.</b>	E-AB-F1242L	<b>Reactivity</b>	Human
<b>Storage</b>	Store at 2~8°C, Avoid freeze / thaw cycles	<b>Applications</b>	FCM

**Important Note:** Centrifuge before opening to ensure complete recovery of vial contents.

### Antigen Information

<b>Alternate Names</b>	Ecto-5'-nucleotidase, E.C3.1.3.5, L-VAP-2, NT5E, 5'-NT
<b>Uniprot ID</b>	P21589
<b>Background</b>	CD73 is a 70 kD glycoposphatidylinositol (GPI)-linked 5'-nucleotidase, which is also known as ecto-5'-nucleotidase. It converts adenosine monophosphate (AMP) to adenosine. CD73 is expressed on subsets of T and B cells, mesenchymal stem cells, follicular dendritic cells, endothelial cells, and epithelial cells. It has been reported that CD73 costimulates T cell activation, and mediates adhesion of lymphocytes to follicular dendritic cells and endothelial cells.

### Product Details

<b>Form</b>	Liquid
<b>Size</b>	20Tests/100Tests/100Tests×2
<b>Clone No.</b>	AD2
<b>Host</b>	Mouse
<b>Isotype</b>	Mouse IgG1, κ
<b>Reactivity</b>	Human
<b>Application</b>	FCM
<b>Isotype Control</b>	<a href="#">Elab Fluor® 488 Mouse IgG1, κ Isotype Control[MOPC-21] [Product E-AB-F09792L]</a>
<b>Storage Buffer</b>	Phosphate buffered solution, pH 7.2, containing 0.09% stabilizer and 1% protein protectant.
<b>Shipping</b>	Biological ice pack at 4 °C
<b>Stability &amp; Storage</b>	Keep as concentrated solution. Store at 2~8°C and protected from prolonged exposure to light.Do not freeze. This product is guaranteed up to one year from purchase.

### For Research Use Only

## Fluorophore

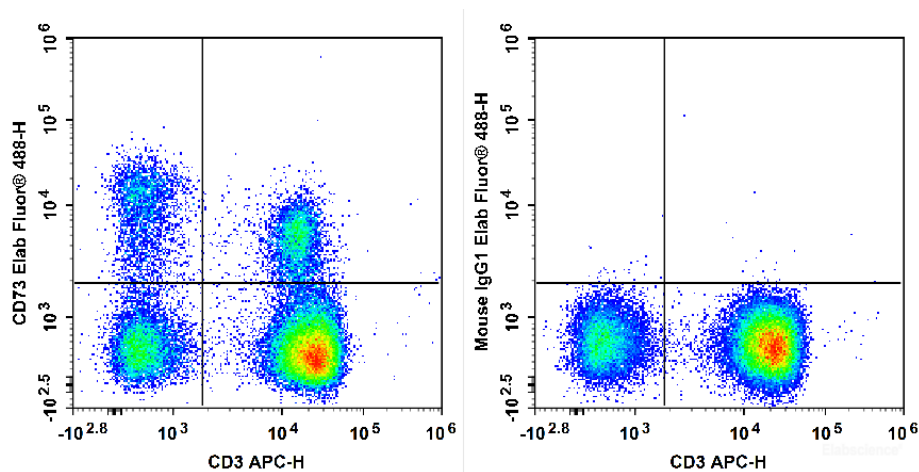
**Conjugation:** Elab Fluor® 488

Elab Fluor® 488 is designed to be excited by the Blue laser (488 nm) and detected using an optical filter centered near 520 nm (e.g., a 525/40 nm bandpass filter).

## Recommended usage

Each lot of this antibody is quality control tested by flow cytometric analysis. **The amount of the reagent is suggested to be used 5 µL of antibody per test (million cells in 100 µL staining volume or per 100 µL of whole blood).** Please check your vial before the experiment. Since applications vary, the appropriate dilutions must be determined for individual use.

## Product data



Human peripheral blood lymphocytes are stained with APC Anti-Human CD3 Antibody and Elab Fluor® 488 Anti-Human CD73 Antibody[AD2] (Left). Lymphocytes are stained with APC Anti-Human CD3 Antibody and Elab Fluor® 488 Mouse IgG1, κ Isotype Control (Right).

## Related Information

1. Sample Preparation for Flow Cytometry <https://www.elabscience.com/List-detail-5594.html>
2. Staining Cell Surface Targets for Flow Cytometry <https://www.elabscience.com/List-detail-5568.html>
3. Flow Cytometry Troubleshooting Tips <https://www.elabscience.com/List-detail-5593.html>
4. How to select the appropriate detection channel through the spectrogram? <https://www.elabscience.com/List-detail-459742.html>