

## SNRPF Polyclonal Antibody

**Catalog No.** E-AB-63643

**Note:** Centrifuge before opening to ensure complete recovery of vial contents.

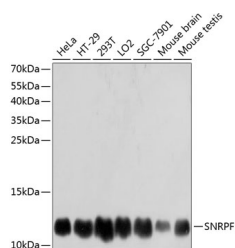
### Description

<b>Reactivity</b>	Human, Mouse, Rat
<b>Immunogen</b>	Recombinant fusion protein of human SNRPF (NP_003086.1).
<b>Host</b>	Rabbit
<b>Isotype</b>	IgG
<b>Purification</b>	Affinity purification
<b>Conjugation</b>	Unconjugated
<b>Buffer</b>	PBS with 0.02% sodium azide, 50% glycerol, pH7.3.

### Applications Recommended Dilution

**WB** 1:500-1:2000

### Data



Western blot analysis of extracts of various cell lines using SNRPF Polyclonal Antibody at dilution of 1:3000.

**Observed Mw:12kDa**  
**Calculated Mw:9kDa**

### Preparation & Storage

**Storage** Store at -20°C. Avoid freeze / thaw cycles.

### Background

SNRPF (Small Nuclear Ribonucleoprotein Polypeptide F) is a Protein Coding gene. Among its related pathways are Transport of the SLBP independent Mature mRNA and mRNA Splicing - Minor Pathway. Gene Ontology (GO) annotations related to this gene include RNA binding. An important paralog of this gene is LSM6.

### For Research Use Only