

ARHGAP25 Polyclonal Antibody

Catalog Number:E-AB-60263



Note: Centrifuge before opening to ensure complete recovery of vial contents.

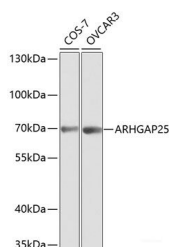
Description

Reactivity	Human,Mouse,Rat
Immunogen	Recombinant fusion protein of human ARHGAP25 (NP_001159748.1).
Host	Rabbit
Isotype	IgG
Purification	Affinity purification
Conjugation	Unconjugated
Formulation	PBS with 0.02% sodium azide, 50% glycerol, pH7.3.

Applications Recommended Dilution

WB	1:500-1:2000
IHC	1:50-1:100
IF	1:50-1:100

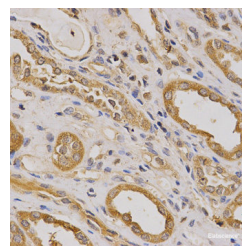
Data



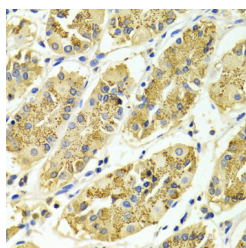
Western blot analysis of extracts of various cell lines using ARHGAP25 Polyclonal Antibody at dilution of 1:1000.

Observed Mw:70kDa

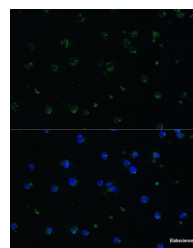
Calculated Mw:51kDa/69kDa/72kDa/73kDa



Immunohistochemistry of paraffin-embedded Human kidney using ARHGAP25 Polyclonal Antibody at dilution of 1:200 (40x lens).



Immunohistochemistry of paraffin-embedded Human gastric using ARHGAP25 Polyclonal Antibody at dilution of 1:100 (40x lens).



Immunofluorescence analysis of Jurkat cells using ARHGAP25 Polyclonal Antibody at dilution of 1:100 (40x lens). Blue: DAPI for nuclear staining.

For Research Use Only

A Reliable Research Partner in Life Science and Medicine

Toll-free: 1-888-852-8623

Web: www.elabscience.com

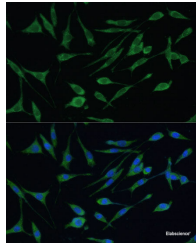
Tel: 1-832-243-6086

Email: techsupport@elabscience.com

Fax: 1-832-243-6017

ARHGAP25 Polyclonal Antibody

Catalog Number:E-AB-60263



Immunofluorescence analysis of L929 cells using ARHGAP25 Polyclonal Antibody at dilution of 1:100 (40x lens). Blue: DAPI for nuclear staining.

Preparation & Storage

Storage Store at -20°C. Avoid freeze / thaw cycles.

Background

Rho GTPase activating protein 25 is a protein that in humans is encoded by the ARHGAP25 gene. The gene is also known as KIAA0053. ARHGAP25 belongs to a family of Rho GTPase-modulating proteins which are implicated in actin remodeling, cell polarity, and cell migration. GTPase activator for the Rho-type GTPases by converting them to an inactive GDP-bound state.

For Research Use Only

A Reliable Research Partner in Life Science and Medicine

Toll-free: 1-888-852-8623

Web: www.elabscience.com

Tel: 1-832-243-6086

Email: techsupport@elabscience.com

Fax: 1-832-243-6017