

ALDH2 Polyclonal Antibody

Catalog No. E-AB-60265

Note: Centrifuge before opening to ensure complete recovery of vial contents.

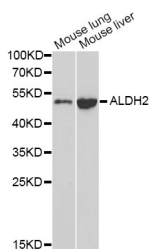
Description

Reactivity	Human, Mouse, Rat
Immunogen	Recombinant protein of human ALDH2
Host	Rabbit
Isotype	IgG
Purification	Affinity purification
Conjugation	Unconjugated
Buffer	PBS with 0.02% sodium azide and 50% glycerol pH 7.4.

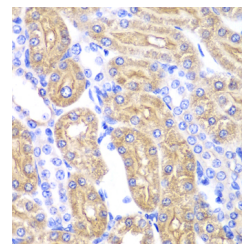
Applications Recommended Dilution

WB	1:500-1:2000
IHC	1:50-1:200
IF	1:50-1:200

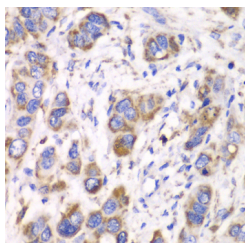
Data



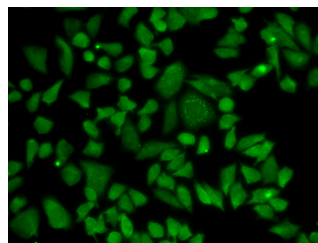
Western blot analysis of extracts of various cell lines with ALDH2 Polyclonal Antibody
Observed Mw:53kDa
Calculated Mw:50kDa/56kDa



Immunohistochemistry of paraffin-embedded rat kidney with ALDH2 Polyclonal Antibody



Immunohistochemistry of paraffin-embedded human esophageal cancer with ALDH2 Polyclonal Antibody



Immunofluorescence analysis of A549 cells with ALDH2 Polyclonal Antibody

Preparation & Storage

Storage Store at -20°C. Avoid freeze / thaw cycles.

For Research Use Only

Background

This protein belongs to the aldehyde dehydrogenase family of proteins. Aldehyde dehydrogenase is the second enzyme of the major oxidative pathway of alcohol metabolism. Two major liver isoforms of aldehyde dehydrogenase, cytosolic and mitochondrial, can be distinguished by their electrophoretic mobilities, kinetic properties, and subcellular localizations. Most Caucasians have two major isozymes, while approximately 50% of East Asians have the cytosolic isozyme but not the mitochondrial isozyme. A remarkably higher frequency of acute alcohol intoxication among East Asians than among Caucasians could be related to the absence of a catalytically active form of the mitochondrial isozyme. The increased exposure to acetaldehyde in individuals with the catalytically inactive form may also confer greater susceptibility to many types of cancer. This gene encodes a mitochondrial isoform, which has a low K_m for acetaldehydes, and is localized in mitochondrial matrix. Alternative splicing results in multiple transcript variants encoding distinct isoforms.

For Research Use Only