

SLC12A7 Polyclonal Antibody

Catalog No. E-AB-63682

Note: Centrifuge before opening to ensure complete recovery of vial contents.

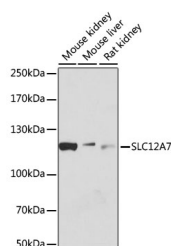
Description

Reactivity	Human, Mouse, Rat
Immunogen	Recombinant fusion protein of human SLC12A7 (NP_006589.2).
Host	Rabbit
Isotype	IgG
Purification	Affinity purification
Conjugation	Unconjugated
Buffer	PBS with 0.02% sodium azide, 50% glycerol, pH7.3.

Applications Recommended Dilution

WB 1:500-1:2000

Data



Western blot analysis of extracts of various cell lines using SLC12A7 Polyclonal Antibody at dilution of 1:1000.

Observed Mw:119kDa
Calculated Mw:28kDa/119kDa

Preparation & Storage

Storage Store at -20°C. Avoid freeze / thaw cycles.

Background

Mediates electroneutral potassium-chloride cotransport when activated by cell swelling. May mediate K⁺ uptake into Deiters' cells in the cochlea and contribute to K⁺ recycling in the inner ear. Important for the survival of cochlear outer and inner hair cells and the maintenance of the organ of Corti. May be required for basolateral Cl⁻ extrusion in the kidney and contribute to renal acidification (By similarity).

For Research Use Only