

CGA Polyclonal Antibody

Catalog No. E-AB-60275

Note: Centrifuge before opening to ensure complete recovery of vial contents.

Description

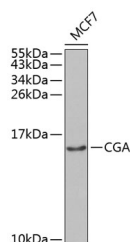
| | |
|---------------------|--|
| Reactivity | Human,Mouse |
| Immunogen | Recombinant fusion protein of human CGA (NP_000726.1). |
| Host | Rabbit |
| Isotype | IgG |
| Purification | Affinity purification |
| Conjugation | Unconjugated |
| Buffer | PBS with 0.02% sodium azide, 50% glycerol, pH7.3. |

Applications

Recommended Dilution

WB 1:500-1:2000

Data



Western blot analysis of extracts of MCF-7 cells using CGA Polyclonal Antibody at dilution of 1:1000.

Observed Mw:13kDa
Calculated Mw:13kDa

Preparation & Storage

Storage Store at -20°C. Avoid freeze / thaw cycles.

Background

The four human glycoprotein hormones chorionic gonadotropin (CG), luteinizing hormone (LH), follicle stimulating hormone (FSH), and thyroid stimulating hormone (TSH) are dimers consisting of alpha and beta subunits that are associated noncovalently. The alpha subunits of these hormones are identical, however, their beta chains are unique and confer biological specificity. The protein encoded by this gene is the alpha subunit and belongs to the glycoprotein hormones alpha chain family. Two transcript variants encoding different isoforms have been found for this gene.

For Research Use Only