

B2M Polyclonal Antibody

Catalog No. E-AB-64153

Note: Centrifuge before opening to ensure complete recovery of vial contents.

Description

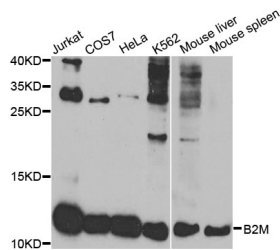
Reactivity	Human, Mouse, Rat
Immunogen	Recombinant protein of human B2M
Host	Rabbit
Isotype	IgG
Purification	Affinity purification
Conjugation	Unconjugated
Buffer	PBS with 0.02% sodium azide and 50% glycerol pH 7.4.

Applications Recommended Dilution

WB 1:500 - 1:2000

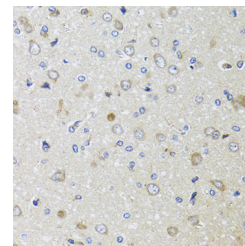
IHC 1:50 - 1:200

Data

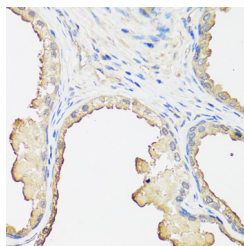


Western blot analysis of extracts of various cell lines with B2M Polyclonal Antibody

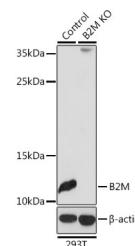
Observed Mw:12kDa
Calculated Mw:13kDa



Immunohistochemistry of paraffin-embedded rat brain with B2M Polyclonal Antibody



Immunohistochemistry of paraffin-embedded human prostate with B2M Polyclonal Antibody



Western blot analysis of extracts from normal (control) and B2M knockout (KO) 293T cells, using B2M Polyclonal Antibody at dilution of 1:3000.

Preparation & Storage

Storage Store at -20°C. Avoid freeze / thaw cycles.

For Research Use Only

Background

This gene encodes a serum protein found in association with the major histocompatibility complex (MHC) class I heavy chain on the surface of nearly all nucleated cells. The protein has a predominantly beta-pleated sheet structure that can form amyloid fibrils in some pathological conditions. The encoded antimicrobial protein displays antibacterial activity in amniotic fluid. A mutation in this gene has been shown to result in hypercatabolic hypoproteinemia.