

REG3A Polyclonal Antibody

Catalog No. E-AB-64197

Note: Centrifuge before opening to ensure complete recovery of vial contents.

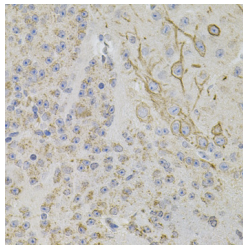
Description

Reactivity	Human,Mouse,Rat
Immunogen	Recombinant fusion protein of human REG3A (NP_002571.1).
Host	Rabbit
Isotype	IgG
Purification	Affinity purification
Conjugation	Unconjugated
Buffer	PBS with 0.02% sodium azide, 50% glycerol, pH7.3.

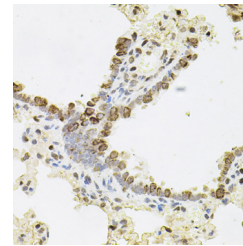
Applications Recommended Dilution

IHC	1:50-1:200
------------	------------

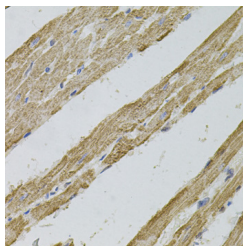
Data



Immunohistochemistry of paraffin-embedded Mouse brain using REG3A Polyclonal Antibody



Immunohistochemistry of paraffin-embedded Rat lung using REG3A Polyclonal Antibody



Immunohistochemistry of paraffin-embedded Rat heart using REG3A Polyclonal Antibody

Preparation & Storage

Storage Store at -20°C. Avoid freeze / thaw cycles.

Background

This gene encodes a pancreatic secretory protein that may be involved in cell proliferation or differentiation. It has similarity to the C-type lectin superfamily. The enhanced expression of this gene is observed during pancreatic inflammation and liver carcinogenesis. The mature protein also functions as an antimicrobial protein with antibacterial

For Research Use Only

activity. Alternate splicing results in multiple transcript variants that encode the same protein.