

## RCN2 Polyclonal Antibody

**Catalog No.** E-AB-64210

*Note:* Centrifuge before opening to ensure complete recovery of vial contents.

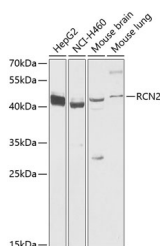
### Description

|                     |   |
|---------------------|---|
| <b>Reactivity</b>   | Human, Mouse  |
| <b>Immunogen</b>    | Recombinant fusion protein of human RCN2 (NP_002893.1). |
| <b>Host</b>         | Rabbit  |
| <b>Isotype</b>      | IgG   |
| <b>Purification</b> | Affinity purification                                   |
| <b>Conjugation</b>  | Unconjugated  |
| <b>Buffer</b>       | PBS with 0.02% sodium azide, 50% glycerol, pH7.3.       |

### Applications Recommended Dilution

**WB 1:500-1:2000**

### Data



Western blot analysis of extracts of various cell lines using RCN2 Polyclonal Antibody at dilution of 1:1000.

**Observed Mw:42kDa**

**Calculated Mw:36kDa/39kDa**

### Preparation & Storage

**Storage** Store at -20°C. Avoid freeze / thaw cycles.

### Background

The protein encoded by this gene is a calcium-binding protein located in the lumen of the ER. The protein contains six conserved regions with similarity to a high affinity Ca(+2)-binding motif, the EF-hand. This gene maps to the same region as type 4 Bardet-Biedl syndrome, suggesting a possible causative role for this gene in the disorder. Alternatively spliced transcript variants encoding different isoforms have been found for this gene.

### For Research Use Only