

POP4 Polyclonal Antibody

Catalog No. E-AB-64248

Note: Centrifuge before opening to ensure complete recovery of vial contents.

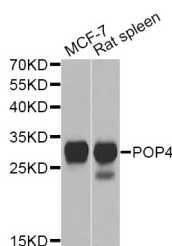
Description

Reactivity	Human,Rat
Immunogen	Recombinant protein of human POP4
Host	Rabbit
Isotype	IgG
Purification	Affinity purification
Conjugation	Unconjugated
Buffer	PBS with 0.02% sodium azide and 50% glycerol pH 7.4.

Applications Recommended Dilution

WB 1:500-1:2000

Data



Western blot analysis of extracts of various cell lines
with POP4 Polyclonal Antibody

Observed Mw:26kDa
Calculated Mw:25kDa

Preparation & Storage

Storage Store at -20°C. Avoid freeze / thaw cycles.

Background

This gene encodes one of the protein subunits of the small nucleolar ribonucleoprotein complexes: the endoribonuclease for mitochondrial RNA processing complex and the ribonuclease P complex. The encoded protein is localized to the nucleus and associates directly with the RNA component of these complexes. This protein is involved in processing of precursor RNAs. Alternative splicing results in multiple transcript variants.

For Research Use Only