

PRPF19 Polyclonal Antibody

Catalog No. E-AB-64265

Note: Centrifuge before opening to ensure complete recovery of vial contents.

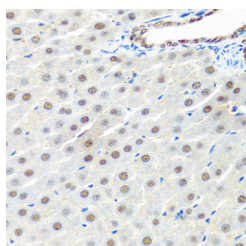
Description

Reactivity	Human, Mouse, Rat
Immunogen	Recombinant fusion protein of human PRPF19 (NP_055317.1).
Host	Rabbit
Isotype	IgG
Purification	Affinity purification
Conjugation	Unconjugated
Buffer	PBS with 0.02% sodium azide, 50% glycerol, pH7.3.

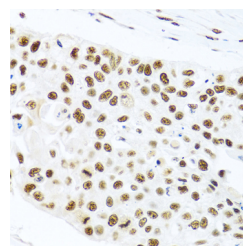
Applications Recommended Dilution

IHC 1:50-1:200

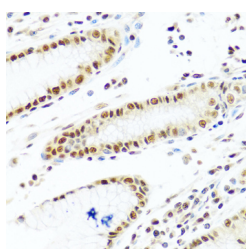
Data



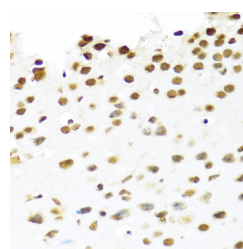
Immunohistochemistry of paraffin-embedded Rat liver using PRPF19 Polyclonal Antibody at dilution of 1:100 (40x lens).



Immunohistochemistry of paraffin-embedded Human lung cancer using PRPF19 Polyclonal Antibody at dilution of 1:100 (40x lens).



Immunohistochemistry of paraffin-embedded Human stomach using PRPF19 Polyclonal Antibody at dilution of 1:100 (40x lens).



Immunohistochemistry of paraffin-embedded Mouse brain using PRPF19 Polyclonal Antibody at dilution of 1:100 (40x lens).

Preparation & Storage

Storage Store at -20°C. Avoid freeze / thaw cycles.

Background

PRPF19 (Pre-mRNA Processing Factor 19) is a Protein Coding gene. Diseases associated with PRPF19 include

For Research Use Only

Poikiloderma With Neutropenia and Retinitis Pigmentosa 19. Among its related pathways are Transcription-Coupled Nucleotide Excision Repair (TC-NER) and Gene Expression. Gene Ontology (GO) annotations related to this gene include identical protein binding and ubiquitin-protein transferase activity. An important paralog of this gene is WDR36.