

LGR4 Polyclonal Antibody

Catalog No. E-AB-64294

Note: Centrifuge before opening to ensure complete recovery of vial contents.

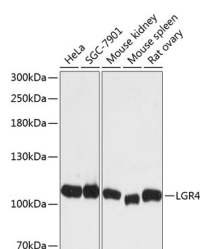
Description

Reactivity	Human, Mouse, Rat
Immunogen	Recombinant fusion protein of human LGR4 (NP_060960.2).
Host	Rabbit
Isotype	IgG
Purification	Affinity purification
Conjugation	Unconjugated
Buffer	PBS with 0.02% sodium azide, 50% glycerol, pH7.3.

Applications Recommended Dilution

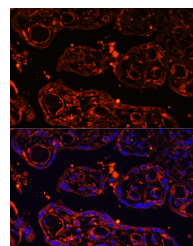
WB 1:1000-1:3000 IF
1:50-1:200

Data



Western blot analysis of extracts of various cell lines using LGR4 Polyclonal Antibody at dilution of 1:3000.

Observed Mw:105kDa
Calculated Mw:101kDa/104kDa



Immunofluorescence analysis of Human placenta using LGR4 Polyclonal Antibody at dilution of 1:100 (40x lens). Blue: DAPI for nuclear staining.

Preparation & Storage

Storage Store at -20°C. Avoid freeze / thaw cycles.

Background

The protein encoded by this gene is a G-protein coupled receptor that binds R-spondins and activates the Wnt signaling pathway. This Wnt signaling pathway activation is necessary for proper development of many organs of the body.

For Research Use Only