

HEL308 Polyclonal Antibody

Catalog Number:E-AB-64295

Note: Centrifuge before opening to ensure complete recovery of vial contents.

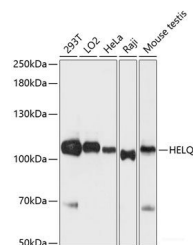
Description

Reactivity	Human,Mouse,Rat
Immunogen	Recombinant fusion protein of human HEL308 (NP_598375.2).
Host	Rabbit
Isotype	IgG
Purification	Affinity purification
Conjugation	Unconjugated
Formulation	PBS with 0.02% sodium azide, 50% glycerol, pH7.3.

Applications Recommended Dilution

WB	1:1000-1:3000
-----------	---------------

Data



Western blot analysis of extracts of various cell lines using HEL308 Polyclonal Antibody at dilution of 1:3000.

Observed Mw:124kDa

Calculated Mw:15kDa/28kDa/35kDa/124kDa

Preparation & Storage

Storage Store at -20°C. Avoid freeze / thaw cycles.

Background

HEL308 is a single-stranded DNA-dependent ATPase and DNA helicase.

For Research Use Only

A Reliable Research Partner in Life Science and Medicine

Toll-free: 1-888-852-8623

Web: www.elabscience.com

Tel: 1-832-243-6086

Email: techsupport@elabscience.com

Fax: 1-832-243-6017