

CSN2 Polyclonal Antibody

Catalog Number:E-AB-64318



Note: Centrifuge before opening to ensure complete recovery of vial contents.

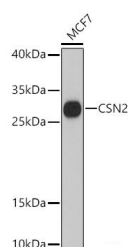
Description

Reactivity	Human
Immunogen	A synthetic peptide of human CSN2 (NP_001882.1).
Host	Rabbit
Isotype	IgG
Purification	Affinity purification
Conjugation	Unconjugated
Formulation	PBS with 0.02% sodium azide, 50% glycerol, pH7.3.

Applications Recommended Dilution

WB	1:500-1:2000
-----------	--------------

Data



Western blot analysis of extracts of MCF7 cells using CSN2 Polyclonal Antibody at dilution of 1:3000.

Observed Mw:30kDa
Calculated Mw:25kDa

Preparation & Storage

Storage Store at -20°C. Avoid freeze / thaw cycles.

Background

This gene is a member of the beta casein family. There are two types of casein protein, beta (encoded by this gene) and kappa, both of which are secreted in human milk. Beta casein is the principal protein in human milk and the primary source of essential amino acids for a suckling infant. Beta and kappa casein proteins acting together form spherical micelles which bind within them important dietary minerals, such as calcium and phosphorous. Alternative splicing results in multiple transcript variants.

For Research Use Only

A Reliable Research Partner in Life Science and Medicine

Toll-free: 1-888-852-8623

Web: www.elabscience.com

Tel: 1-832-243-6086

Email: techsupport@elabscience.com

Fax: 1-832-243-6017