

MCF2 Polyclonal Antibody

Catalog No. E-AB-64345

Note: Centrifuge before opening to ensure complete recovery of vial contents.

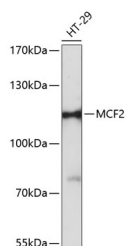
Description

Reactivity	Human,Mouse
Immunogen	Recombinant fusion protein of human MCF2 (NP_001165347.1).
Host	Rabbit
Isotype	IgG
Purification	Affinity purification
Conjugation	Unconjugated
Buffer	PBS with 0.02% sodium azide, 50% glycerol, pH7.3.

Applications Recommended Dilution

WB 1:500-1:2000

Data



Western blot analysis of extracts of HT-29 cells using MCF2 Polyclonal Antibody at dilution of 1:3000.

Observed Mw:108kDa

Calculated Mw:95kDa/100kDa/107kDa/109kDa/114kDa/116kDa

Preparation & Storage

Storage Store at -20°C. Avoid freeze / thaw cycles.

Background

The oncogenic protein encoded by this gene is a guanine nucleotide exchange factor (GEF) that exerts control over some members of the Rho family of small GTPases. Several transcript variants encoding different isoforms have been found for this gene. These isoforms exhibit different expression patterns and varying levels of GEF activity.

For Research Use Only