

Elab Fluor® Violet 450 Anti-Human/Mouse/Rat CD47 Antibody[MIAP410]

Catalog No.	E-AB-F1016Q	Reactivity	Human,Mouse,Rat
Storage	Store at 2~8°C, Avoid freeze / thaw cycles	Applications	FCM

Important Note: Centrifuge before opening to ensure complete recovery of vial contents.

Antigen Information

Alternate Names	Leukocyte surface antigen CD47,Cd47,Integrin-associated protein,IAP
Uniprot ID	Q08722,Q61735,P97829
Gene ID	961,16423,29364
Background	CD47, also known as Integrin-Associated Protein (IAP), is a membrane protein of about 50 kD with an IgV-like extracellular domain, a five membrane-spanning segment and a short terminal cytoplasmic region. It is widely expressed on many cell types and often associated with beta 3 integrins. It has been reported that CD47 functions as a self marker. Red cells lacking CD47 were rapidly cleared from the bloodstream by splenic macrophages. By binding to SIRPα, CD47 controls hemostatic innate immune functions, such as phagocytosis and cell trafficking.

Product Details

Form	Liquid
Size	20Tests/100Tests/100Tests×2
Clone No.	MIAP410
Host	Mouse
Isotype	Mouse IgG1, κ
Reactivity	Human,Mouse,Rat
Application	FCM
Isotype Control	Elab Fluor® Violet 450 Mouse IgG1, κ Isotype Control[MOPC-21] [Product E-AB-F09792Q]
Storage Buffer	Phosphate buffered solution, pH 7.2, containing 0.09% stabilizer and 1% protein protectant.
Shipping	Biological ice pack at 4 °C
Stability & Storage	Keep as concentrated solution. Store at 2~8°C and protected from prolonged exposure to light.Do not freeze. This product is guaranteed up to one year from purchase.

Fluorophore

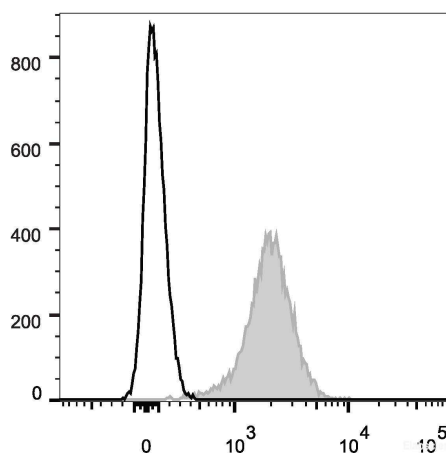
Conjugation: Elab Fluor® Violet 450

Elab Fluor® Violet 450 is designed to be excited by the violet laser (405 nm) and detected using an optical filter centered near 450 nm (e.g., a 450/45 nm bandpass filter).

Recommended usage

Each lot of this antibody is quality control tested by flow cytometric analysis. **The amount of the reagent is suggested to be used 5 µL of antibody per test (million cells in 100 µL staining volume or per 100 µL of whole blood).** Please check your vial before the experiment. Since applications vary, the appropriate dilutions must be determined for individual use.

Product data



C57BL/6 murine splenocytes are stained with Elab Fluor® Violet 450 Anti-Human/Mouse/Rat CD47 Antibody (filled gray histogram). Unstained splenocytes (empty black histogram) are used as control.

Related Information

1. Sample Preparation for Flow Cytometry <https://www.elabscience.com/List-detail-5594.html>
2. Staining Cell Surface Targets for Flow Cytometry <https://www.elabscience.com/List-detail-5568.html>
3. Flow Cytometry Troubleshooting Tips <https://www.elabscience.com/List-detail-5593.html>
4. How to select the appropriate detection channel through the spectrogram? <https://www.elabscience.com/List-detail-459742.html>